

DIVER C.E. MAX



Technical specifications

| | |
|--------------------------------|--|
| Usable length | 145 cm |
| Tip length | 4 mm |
| RX section | 18.5 cm |
| Guidewire compatibility | 0.014" |
| Guiding catheter compatibility | 6F (I.D. \geq 0.070") 7F (I.D. \geq 0.078") |
| Coating | Distal LFC Hydrophilic |

1 French (F) = 0.333 mm - 1 inch (") = 25.4 mm

DIVER C.E. MAX



Rapid Exchange Clot Extraction Catheter

Effective
Thrombus Removal:
The **natural** way,
the **fastest** way

Specifications

| Ref N° | Guidewire compatibility (") | Guiding Catheter compatibility (") | RX Section (mm) | Usable length (cm) | Sideholes |
|---------------|-----------------------------|------------------------------------|-----------------|--------------------|-----------|
| DVC 060014145 | 0.014 | 6F (ID \geq 0.070") | 185 | 145 | no |
| DVC 061014145 | 0.014 | 6F (ID \geq 0.070") | 185 | 145 | yes |
| DVC 070014145 | 0.014 | 7F (ID \geq 0.078") | 185 | 145 | no |
| DVC 071014145 | 0.014 | 7F (ID \geq 0.078") | 185 | 145 | yes |

Everything you need, promptly available

- 2 syringes, 30 ml
- Stopcock
- Extension line
- Filter basket



NEW

Circumferential holes
Shorter Tip

We make ideas come alive

INVATEC
Innovative Technologies

Global Sales & Marketing Office
Invatec Technology Center GmbH - Hungerbuelstrasse 12 - 8500 Frauenfeld - Switzerland
Manufacturer & Global Headquarters
Invatec S.p.A. - Via Martiri della Libertà, 7 - 25030 Roncadelle (BS) - Italy
www.invatec.com - info@invatec.com

Under continuous product development program, Invatec reserves the right to modify specifications without prior notice.



ISO 9001:2000 & EN ISO 13485:2003 Certified

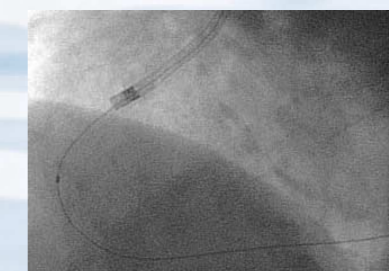
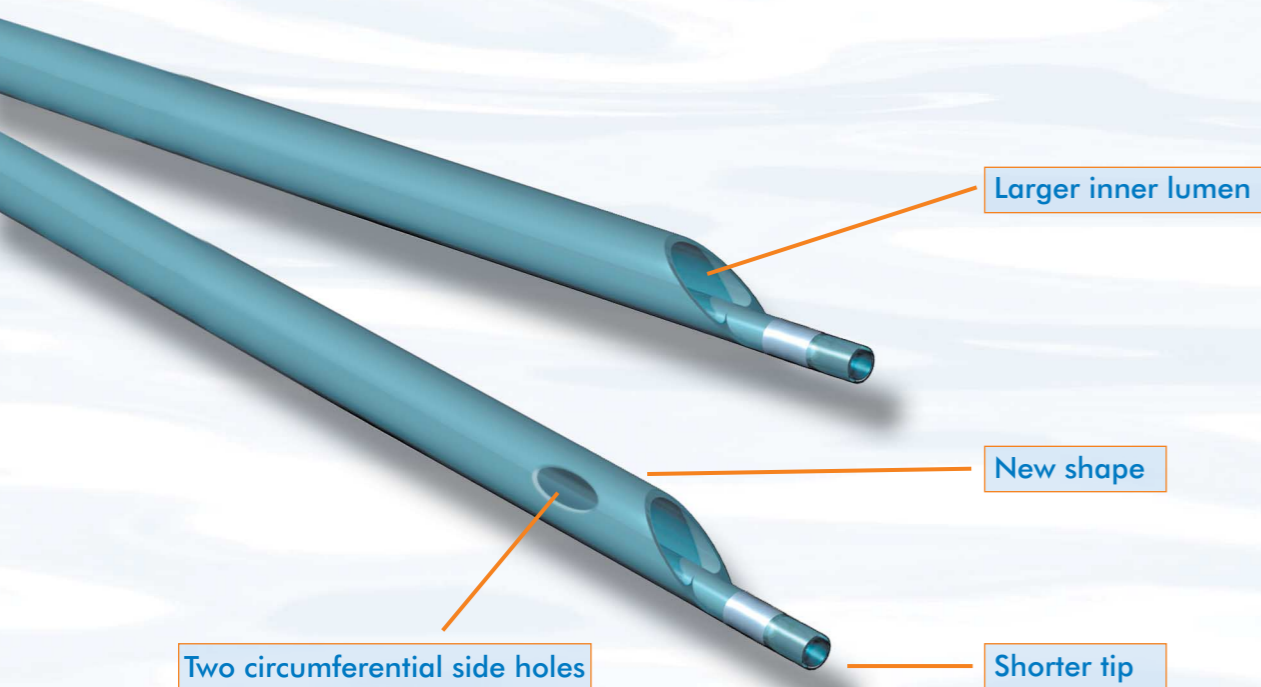
INVATEC
Innovative Technologies

DIVER C.E. MAX

**Rapid Exchange
Clot Extraction Catheter**

**Get cl(e)arity in one pass...
it's 10 sec. away**

The next generation from the pioneers
of thrombus aspiration...



First choice for AMI treatment and acute stent thrombosis

- The new generation of the first dedicated clot extraction catheter fully interprets the operational and clinical needs of emergency interventions: timing and effectiveness.

2 versions for uncompromised performance

- With side holes for fresh thrombus removal (\approx 2-6 h post symptom onset)
- Without side holes for organized thrombus removal (\approx 6-24 h post symptom onset)
- 6F and 7F size

Ultra flexible shaft for superb trackability

- allows fast and safe access towards thrombus site

Cross section with enlarged lumen

- for increased thrombus mass aspiration

