



Cardiovascular Products **CATALOGUE**

—
TO ADDRESS
GLOBAL MEDICAL NEEDS



LEPU MEDICAL TECHNOLOGY (BEIJING) CO., LTD.

Head Office:
No.37 Chaoqian Road, Changping
District, Beijing, China, 102200
Tel: +86-10-80120666
Web: en.lepumedical.com

Ver.2023217

Lepu Medical Technology (Beijing) Co., Ltd.

COMPANY PROFILE

LEPU MEDICAL

Major Subsidiaries



Lepu Medical Technology (Beijing) Co., Ltd. was established in 1999. Lepu Medical is specialized in developing, manufacturing and distributing the high-tech medical devices and equipment. Today, Lepu Medical has grown into a global leading group company in the fields of cardiovascular, neurovascular and peripheral vascular interventions, structural heart diseases, surgical cardiology, cardiac rhythm management, anesthesia and critical care, in vitro diagnostics and general surgery with products include coronary stents, dilatation balloon catheters, interventional accessories, occlusion devices, mechanical heart valves, electrophysiology catheters, pacemakers, in vitro diagnostic products, critical care products, angiography systems and surgical staplers. In 2009, Lepu Medical went public in ChiNext Shenzhen Stock Exchange market (stock code: 300003).

Now Lepu Medical totally has 32 primary subsidiary companies worldwide. Currently, there are 123 products have received the CE certificates, and 17 products have got the FDA approvals. As the National Interventional Cardiology Medical Instruments & Engineering Technology Research Center, Lepu Medical Group's top strategy is to build up a 4 in 1 platform includes medical devices, medicines, health services and mobile medicals for cardiac treatments.

Lepu Medical has established three overseas subsidiary companies in Netherland, Turkey and India, obtained local registrations in 27 countries, and built the sales and distribution channels in over 80 countries and regions. Lepu Medical upholds "integrity, quality and scientific innovation" as its spirit, commitments to provide the best quality of products and services to satisfy the needs of healthcare professionals and patients.

The **Global Leading Group Company** in the Fields of High-tech Medical Devices and Equipment

This catalogue includes information of products available in certain countries. Availability of these products may vary with locations. Please contact Lepu Medical for more information about the approval in your region.

TABLE OF CONTENTS

01

Coronary Stents

- 03 NeoVas™ Sirolimus-eluting Bioresorbable Coronary Stent System
- 04 Nano+™ Polymer-free Sirolimus-eluting Coronary Stent System
- 05 GuReater® CoCr Sirolimus-eluting Coronary Stent System CE FDA
- 06 Partner® Sirolimus-eluting Coronary Stent System CE
- 07 H-Stent™ Coronary Stent System CE

02

Coronary Balloons

- PTCA Balloons**
- 09 Vesselin® Drug Coated Coronary Balloon Catheter
- 10 Vesside™ Cutting Balloon System
- 11 Hoper™ PTCA Balloon Dilatation Catheter CE FDA
- 12 Mini Tadpole™ Coronary Dilatation Catheter CE
- 13 Tadpole™ Coronary Dilatation Catheter CE
- NC Balloon**
- 14 NC Tadpole™ Coronary Dilatation Catheter CE

03

Catheters

- 17 Angiographic Catheter
- 19 Orien™ Guiding Catheter CE
- 21 Thromsweeper™ Thrombus Extraction Catheter
- 22 Deliver™ Infusion Catheter

04

Guide Wires

- 25 Angiographic Guide Wire
- 26 Ultraskin™ Hydrophilic Guide Wire CE FDA
- 27 Balancium™ Guide Wire CE

05

Introducer Sheaths

- 29 Shoocin™ Introducer Kit CE FDA
- 31 Brilliant™ Introducer Kit CE FDA

06

Accessories

- 35 Rayband™ Radial Artery Compression Tourniquet CE FDA
- 36 Angioway™ Y-Hemostasis Valve Set CE FDA
- 37 Angiopower™ Inflation Device CE FDA
- 38 Inflation Devices Kit CE FDA
- 39 Angioway™ Manifolds CE
- 40 Angioway™ High Pressure Extension Tubings CE
- 41 Introducer Needle
- 42 Angiospring™ Angiography Control Syringe CE
- 43 Contrast Medium Injection Manifold Kits CE

07

Peripheral Interventional Products

- PTA Balloon**
- 45 Supercross™ PTA Balloon Dilatation Catheters CE
- 47 Angiocide™ Peripheral Cutting Balloon

08

Cardiac Rhythm Management Products

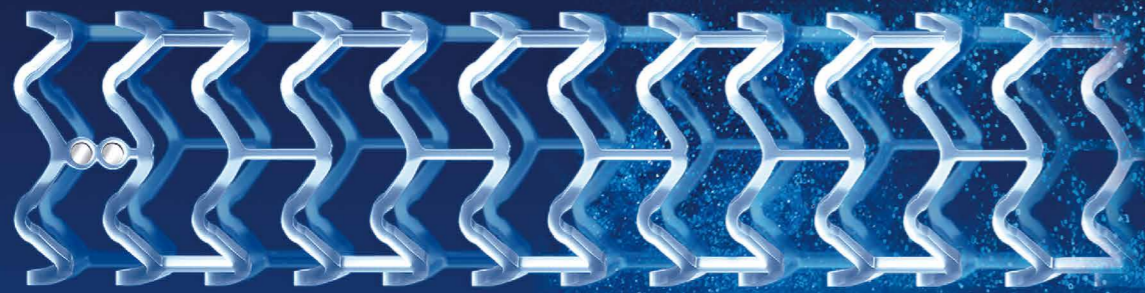
- Pacemakers**
- 51 Implantable Single Chamber Pacemaker
- 52 Implantable Dual Chamber Pacemaker

09

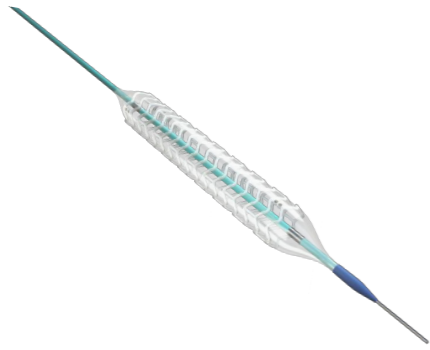
Medical Angiography X-ray System

- Floor-mounted**
- 55 Vicor-CV SWIFT
- Ceiling-mounted**
- 59 Vicor-CV Robin C / F

01 / Coronary Stents



- 03 NeoVas™ Sirolimus-eluting Bioresorbable Coronary Stent System
- 04 Nano+™ Polymer-free Sirolimus-eluting Coronary Stent System
- 05 GuReater® CoCr Sirolimus-eluting Coronary Stent System CE
- 06 Partner® Sirolimus-eluting Coronary Stent System CE
- 07 H-Stent™ Coronary Stent System CE



Stent Platform

- Fully degradable poly(L-lactide)
- Sine wave structure in space, In-phase peak-valley connection

Drug coating

- Fully degradable poly(D,L-lactide)
- Effectively control sirolimus release rate

Drug

- Classical Sirolimus with dose of 15.3ug/mm
- Inhibit the proliferation and migration of smooth muscle cells

Delivery system

- Completely self-developed second-generation rapid-exchange balloon dilatation catheter
- Superior pushability and crossability

Ordering Information

Stent Diameter (mm)	Stent Length (mm)				
	12	15	18	21	24
2.75	LPS 2712	LPS 2715	LPS 2718	LPS 2721	LPS 2724
3.0	LPS 3012	LPS 3015	LPS 3018	LPS 3021	LPS 3024
3.5	LPS 3512	LPS 3515	LPS 3518	LPS 3521	LPS 3524

NeoVas™

Sirolimus-eluting Bioresorbable Coronary Stent System

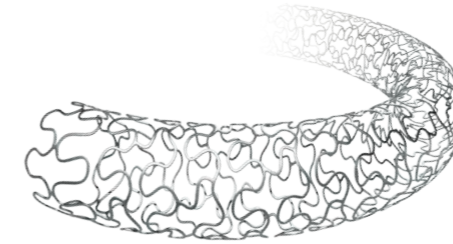
Compliance Chart

Balloon Diameter (mm)	Pressure kPa (atm)										
	203 (2)	405 (4)	608 (6)	709 (7)	810 (8)	1013 (10)	1216 (12)	1418 (14)	1621 (16)	1824 (18)	2027 (20)
2.75	2.60	2.66	2.71	2.73	2.75	2.82	2.88	2.94	3.00	3.06	3.12
3.0	2.84	2.89	2.95	2.97	3.00	3.06	3.12	3.18	3.25	3.30	3.36
3.5	3.37	3.42	3.47	3.50	3.54	3.61	3.68	3.75	3.81	3.88	3.95

NP

RBP

DO NOT EXCEED RBP



Nano+™

Polymer-free Sirolimus-eluting Coronary Stent System

The efficacy of DES

- Nanoporous cavities on strut abluminal surface functioning as drug carrier to ensure the firm adhesion.
- Post-treatment after drug loading helps with sustained drug release.
- Scientific drug releasing period effectively inhibits SMC migration and proliferation.

The safety of BMS

- Polymer-free design significantly reduces the inflammatory response after stent implantation compare to polymer coating stent, which guarantees the long-term safety.
- Polymer-free design facilitates earlier endothelialization which shorten the DAPT time.
- The rough strut surface helps with easier and faster endothelialization to reduce the risk of thrombosis.

New delivery system

- Soft tapered tip provides smooth transition from guidewire to balloon catheter and excellent crossability.
- Short shoulder design at both ends of the balloon reduces the damage to normal vessel next to the lesion.
- Patented hydrophilic coating on distal shaft provides outstanding pushability.

Technical Parameters

Stent Material	316L Stainless Steel
Strut Design	Nanoporous drug carrier on abluminal surface
Metal to Artery Ratio	15%
Recoil	< 2%
Shortening	< 1%
Crossing Profile	0.035*(0.90mm)

Ordering Information

Stent Diameter (mm)	Stent Length (mm)							
	12	15	18	21	24	29	33	36
2.5	LPRPS2512	LPRPS2515	LPRPS2518	LPRPS2521	LPRPS2524	LPRPS2529	LPRPS2533	LPRPS2536
2.75	LPRPS2712	LPRPS2715	LPRPS2718	LPRPS2721	LPRPS2724	LPRPS2729	LPRPS2733	LPRPS2736
3.0	LPRPS3012	LPRPS3015	LPRPS3018	LPRPS3021	LPRPS3024	LPRPS3029	LPRPS3033	LPRPS3036
3.5	LPRPS3512	LPRPS3515	LPRPS3518	LPRPS3521	LPRPS3524	LPRPS3529	LPRPS3533	LPRPS3536
4.0	LPRPS4012	LPRPS4015	LPRPS4018	LPRPS4021	LPRPS4024	LPRPS4029	LPRPS4033	LPRPS4036

*Notice: Please contact local sales for details before placing order.

**Features:**

- 75 µm ultrathin strut thickness and unique strut structure guarantee the excellent compliance of the stent during delivery.
- PLGA biodegradable polymer coating provides precise drug releasing control and scientific degradation period.
- CoCr stent has great radiopacity, biocompatibility, and provides excellent balance between radial strength and flexibility.
- MRI compatible

GuReater®

CoCr
Sirolimus-eluting
Coronary Stent System

**Technical Parameters**

Stent Material	L605 CoCr Alloy
Strut Design	Open cell
Metal to Artery Ratio	15%
Recoil	3.4%
Shortening	< 1%
Strut Thickness	75 µm
Crossing Profile	0.035" (0.90mm)

Ordering Information

Stent Diameter (mm)	Stent Length (mm)							
	12	15	18	21	24	29	33	36
2.5	LPRPC 2512	LPRPC 2515	LPRPC 2518	LPRPC 2521	LPRPC 2524	LPRPC 2529	LPRPC 2533	LPRPC 2536
2.75	LPRPC 2712	LPRPC 2715	LPRPC 2718	LPRPC 2721	LPRPC 2724	LPRPC 2729	LPRPC 2733	LPRPC 2736
3.0	LPRPC 3012	LPRPC 3015	LPRPC 3018	LPRPC 3021	LPRPC 3024	LPRPC 3029	LPRPC 3033	LPRPC 3036
3.5	LPRPC 3512	LPRPC 3515	LPRPC 3518	LPRPC 3521	LPRPC 3524	LPRPC 3529	LPRPC 3533	LPRPC 3536
4.0	LPRPC 4012	LPRPC 4015	LPRPC 4018	LPRPC 4021	LPRPC 4024	LPRPC 4029	LPRPC 4033	LPRPC 4036
4.5	LPRPC 4512	LPRPC 4515	LPRPC 4518	LPRPC 4521	LPRPC 4524	LPRPC 4529	LPRPC 4533	LPRPC 4536

*Notice: Please contact local sales for details before placing order.

**Features**

- PBMA/PEVA double layer polymer coating provides outstanding drug releasing control.
- Scientific drug releasing period effectively inhibits SMC migration and proliferation.
- The thickness of polymer coating is only 6µm, which ensures the good deliverability.
- Outstanding strut thickness provides favorable balance between radial strength and easier endothelialization.
- Large open cell design allows of excellent side branch access.

Partner®

Sirolimus-eluting
Coronary Stent System

**Technical Parameters**

Stent Material	316L Stainless Steel
Strut Design	Open cell
Strut Thickness	90µm
Metal to Artery Ratio	15%
Recoil	< 2%
Shortening	< 1%
Crossing Profile	0.90mm (0.035")

Ordering Information

Stent Diameter (mm)	Stent Length (mm)							
	12	15	18	21	24	29	33	36
2.5	LPRP 2512	LPRP 2515	LPRP 2518	LPRP 2521	LPRP 2524	LPRP 2529	LPRP 2533	LPRP 2536
2.75	LPRP 2712	LPRP 2715	LPRP 2718	LPRP 2721	LPRP 2724	LPRP 2729	LPRP 2733	LPRP 2736
3.0	LPRP 3012	LPRP 3015	LPRP 3018	LPRP 3021	LPRP 3024	LPRP 3029	LPRP 3033	LPRP 3036
3.5	LPRP 3512	LPRP 3515	LPRP 3518	LPRP 3521	LPRP 3524	LPRP 3529	LPRP 3533	LPRP 3536
4.0	LPRP 4012	LPRP 4015	LPRP 4018	LPRP 4021	LPRP 4024	LPRP 4029	LPRP 4033	LPRP 4036

**Features:**

- Optimal strut thickness provides favorable balance between radial strength and deliverability.
- Patented double-helix structure design ensures outstanding flexibility and compliance.
- Large open cell design allows of excellent side branch access.

H-Stent™

Coronary Stent System

**Technical Parameters**

Stent Material	316L Stainless Steel
Strut Design	Open cell
Metal to Artery Ratio	15%-18%
Recoil	< 2%
Shortening	< 1%
Strut Thickness	85µm (0.0033")
Crossing Profile	0.90mm (0.035")

Ordering Information

Stent Diameter (mm)	Stent Length (mm)													
	9	12	14*	15*	16	18*	20	21*	22*	24	27*	29	33*	36*
2.5	LPCSRX 2509	LPCSRX 2512	LPCSRX 2514	LPCSRX 2515	LPCSRX 2516	LPCSRX 2518	LPCSRX 2520	LPCSRX 2521	LPCSRX 2522	LPCSRX 2524	LPCSRX 2527	LPCSRX 2529	LPCSRX 2533	LPCSRX 2536
2.75	LPCSRX 2709	LPCSRX 2712	LPCSRX 2714	LPCSRX 2715	LPCSRX 2716	LPCSRX 2718	LPCSRX 2720	LPCSRX 2721	LPCSRX 2722	LPCSRX 2724	LPCSRX 2727	LPCSRX 2729	LPCSRX 2733	LPCSRX 2736
3.0	LPCSRX 3009	LPCSRX 3012	LPCSRX 3014	LPCSRX 3015	LPCSRX 3016	LPCSRX 3018	LPCSRX 3020	LPCSRX 3021	LPCSRX 3022	LPCSRX 3024	LPCSRX 3027	LPCSRX 3029	LPCSRX 3033	LPCSRX 3036
3.5	/	LPCSRX 3512	LPCSRX 3514	LPCSRX 3515	LPCSRX 3516	LPCSRX 3518	LPCSRX 3520	LPCSRX 3521	LPCSRX 3522	LPCSRX 3524	LPCSRX 3527	LPCSRX 3529	LPCSRX 3533	LPCSRX 3536
4.0	/	LPCSRX 4012	LPCSRX 4014	LPCSRX 4015	LPCSRX 4016	LPCSRX 4018	LPCSRX 4020	LPCSRX 4021	LPCSRX 4022	LPCSRX 4024	LPCSRX 4027	LPCSRX 4029	LPCSRX 4033	LPCSRX 4036

Notice: The sizes with *mark require a minimum quantity of 10 pcs per order. Please contact local sales for details before placing order.

02

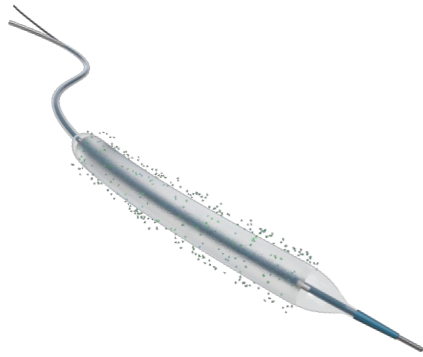
Coronary Balloons

PTCA Balloons

- 09 Vesselin® Drug Coated Coronary Balloon Catheter
- 10 Vesside™ Cutting Balloon System
- 11 Hoper™ PTCA Balloon Dilatation Catheter **CE FDA**
- 12 Mini Tadpole™ Coronary Dilatation Catheter **CE**
- 13 Tadpole™ Coronary Dilatation Catheter **CE**

NC Balloon

- 14 NC Tadpole™ Coronary Dilatation Catheter **CE**



Materials

Improved PEBAX guarantees higher flexibility and enhanced crossability.

Drug

Loaded Paclitaxel inhibit restenosis continuously.

Drug Coating

Coated with Active Pharmaceutical Ingredients grade urea, provide better biocompatibility, facilitate drug releasing effectively.

Delivery system

Spiral cut hypotube design, strengthen the transition section, bring optimized deliverability for transition.

Vesselin®

Drug Coated Coronary Balloon Catheter

Technical Parameters

Distal Shaft O.D.	2.6F
Minimum Guiding Catheter Compatibility	5F
Guide wire Compatibility	0.014"
Effective Length	1350mm
Nominal Pressure	8 atm(Φ2.0mm-Φ3.0mm)/ 6 atm(Φ3.5mm-Φ4.5mm)
Rated Burst Pressure	16 atm(Φ2.0mm-Φ3.5mm)/14 atm(Φ4.0mm-Φ4.5mm)

Ordering Information

Diameter (mm)	Length (mm)									
	9	12	14	16	20	24	28	31	35	38
2.0	LPCDB 20009	LPCDB 20012	LPCDB 20014	LPCDB 20016	LPCDB 20020	LPCDB 20024	LPCDB 20028	LPCDB 20031	LPCDB 20035	LPCDB 20038
2.5	LPCDB 25009	LPCDB 25012	LPCDB 25014	LPCDB 25016	LPCDB 25020	LPCDB 25024	LPCDB 25028	LPCDB 25031	LPCDB 25035	LPCDB 25038
2.75	LPCDB 27009	LPCDB 27012	LPCDB 27014	LPCDB 27016	LPCDB 27020	LPCDB 27024	LPCDB 27028	LPCDB 27031	LPCDB 27035	LPCDB 27038
3.0	--	LPCDB 30012	--	LPCDB 30016	LPCDB 30020	LPCDB 30024	LPCDB 30028	LPCDB 30031	LPCDB 30035	LPCDB 30038
3.5	--	LPCDB 35012	--	LPCDB 35016	LPCDB 35020	LPCDB 35024	LPCDB 35028	LPCDB 35031	LPCDB 35035	LPCDB 35038
4.0	--	LPCDB 40012	--	LPCDB 40016	LPCDB 40020	LPCDB 40024	LPCDB 40028	LPCDB 40031	LPCDB 40035	LPCDB 40038



Vesscide™

Cutting Balloon System

Features

- Segmented Microsurgical blades Design.
- Semi-compliant balloon.
- Inlaid platinum marker.
- Patent hydrophilic coating-Hydrosurf™.

Compliance table

Diameter (mm)	Pressure (atm)									
	4	5	6	7	8	9	10	11	12	
2.0	1.90	1.95	2.00	2.04	2.08	2.12	2.16	2.20	2.25	
2.25	2.15	2.20	2.25	2.29	2.33	2.37	2.41	2.45	2.50	
2.5	2.40	2.45	2.50	2.54	2.58	2.62	2.66	2.70	2.75	
2.75	2.65	2.70	2.75	2.79	2.83	2.87	2.91	2.95	3.00	
3.0	2.90	2.95	3.00	3.04	3.08	3.12	3.16	3.20	3.25	
3.25	3.15	3.20	3.25	3.29	3.33	3.37	3.41	3.45	3.50	
3.5	3.40	3.45	3.50	3.54	3.58	3.62	3.66	3.70	3.75	
3.75	3.65	3.70	3.75	3.79	3.83	3.87	3.91	3.95	4.00	
4.0	3.90	3.95	4.00	4.04	4.08	4.12	4.16	4.20	4.25	

Ordering Information

Balloon Diameter (mm)	Balloon Length (mm)			Number of blades
	5	10	15	
2.0	√	√	√	3
2.25	√	√	√	
2.5	√	√	√	
2.75	√	√	√	
3.0	√	√	√	
3.25	√	√	√	
3.75	√	√	√	4
4.0	√	√	√	

Notice: The sizes with * mark require a minimum quantity of 10 pcs per order. Please contact local sales for details before placing order.

Features

- Small tip profile for good crossability.
- Three-directional memory folding of the balloon allows of size minimization with great withdrawal capability, and ensures the good performance of repeated dilatation.
- Soft tapered tip provides smooth transition from guidewire to balloon catheter to avoid "fish mouth", and minimize the vessel damage.
- Transparent hub is convenient to observe the air bubble to reduce the operation risk.

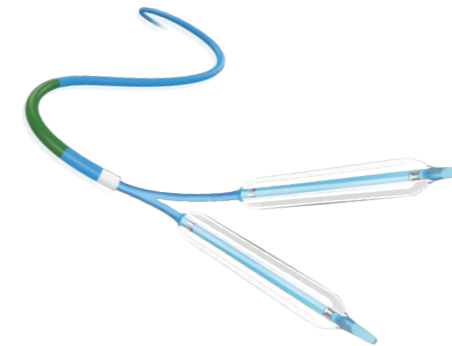
Hoper™**PTCA Balloon
Dilatation Catheter****Technical Parameters**

Catheter Design	Rapid Exchange
Balloon Compliance	Semi-compliant
Marker	2
Distal Shaft O.D.	2.8F
Proximal Shaft O.D.	2.3F
Tip Profile	0.017"
Minimum Guiding Catheter Compatibility	5F (0.056")
Guide Wire Compatibility	0.014"
Effective Length	135cm
Nominal Pressure	8 atm (φ1.5mm-3.0mm) / 6 atm (φ3.5mm-4.0mm)
Rated Burst Pressure	16 atm (φ1.5mm-3.5mm) / 14 atm (φ4.0mm)

Ordering Information

Balloon Diameter (mm)	Balloon Length (mm)										
	9	11*	12	14*	16	18	20	22*	24	26*	30
1.5	LPRX 15009	LPRX 15011	LPRX 15012	LPRX 15014	LPRX 15016	LPRX 15018	LPRX 15020	LPRX 15022	LPRX 15024	LPRX 15026	LPRX 15030
1.75	LPRX 17009	LPRX 17011	LPRX 17012	LPRX 17014	LPRX 17016	LPRX 17018	LPRX 17020	LPRX 17022	LPRX 17024	LPRX 17026	LPRX 17030
2.0	LPRX 20009	LPRX 20011	LPRX 20012	LPRX 20014	LPRX 20016	LPRX 20018	LPRX 20020	LPRX 20022	LPRX 20024	LPRX 20026	LPRX 20030
2.5	LPRX 25009	LPRX 25011	LPRX 25012	LPRX 25014	LPRX 25016	LPRX 25018	LPRX 25020	LPRX 25022	LPRX 25024	LPRX 25026	LPRX 25030
2.75	LPRX 27009	LPRX 27011	LPRX 27012	LPRX 27014	LPRX 27016	LPRX 27018	LPRX 27020	LPRX 27022	LPRX 27024	LPRX 27026	LPRX 27030
3.0	LPRX 30009	LPRX 30011	LPRX 30012	LPRX 30014	LPRX 30016	LPRX 30018	LPRX 30020	LPRX 30022	LPRX 30024	LPRX 30026	LPRX 30030
3.5	LPRX 35009	LPRX 35011	LPRX 35012	LPRX 35014	LPRX 35016	LPRX 35018	LPRX 35020	LPRX 35022	LPRX 35024	LPRX 35026	LPRX 35030
4.0	LPRX 40009	LPRX 40011	LPRX 40012	LPRX 40014	LPRX 40016	LPRX 40018	LPRX 40020	LPRX 40022	LPRX 40024	LPRX 40026	LPRX 40030

Notice: The sizes with * mark require a minimum quantity of 10 pcs per order. Please contact local sales for details before placing order.

**Mini Tadpole™****Coronary Dilatation
Catheter****Features:**

- Small tip and crossing profiles ensure the better performance for CTO lesions.
- Capable for kissing balloon under 6F guiding catheter.
- Patented hydrophilic coating on distal shaft and Hypotube proximal shaft provide good deliverability.
- Three-directional memory folding of the balloon allows of size minimization with great withdrawal capability, and ensures the good performance of repeated dilatation.
- Soft tapered tip provides smooth transition from guidewire to balloon catheter to avoid "fish mouth", and minimize the vessel damage.
- Short shoulder design at both ends of the balloon ensures the precise dilatation, and reduces the damage to normal vessel next to the lesion.

Technical Parameters

Catheter Design	Rapid Exchange
Balloon Compliance	Semi-compliant
Marker	2
Distal Shaft O.D.	2.7F
Proximal Shaft O.D.	1.9F
Tip Profile	0.017"
Minimum Guiding Catheter Compatibility	No less than 5F (0.056")
Guide Wire Compatibility	0.014"
Effective Length	142cm
Nominal Pressure	8 atm (φ2.25mm-3.0mm) / 6 atm (φ3.25mm-4.0mm)
Rated Burst Pressure	16 atm

Ordering Information

Balloon Diameter (mm)	Balloon Length (mm)						
	8	10	12	15	20	25	30
1.5	LPMRX 15008	LPMRX 15010	LPMRX 15012	LPMRX 15015	LPMRX 15020	LPMRX 15025	/
1.75	LPMRX 17008	LPMRX 17010	LPMRX 17012	LPMRX 17015	LPMRX 17020	LPMRX 17025	LPMRX 17030
2.0	LPMRX 20008	LPMRX 20010	LPMRX 20012	LPMRX 20015	LPMRX 20020	LPMRX 20025	LPMRX 20030

*Notice: Please contact local sales for details before placing order.



Features

- Performance for kissing balloon under 6F guiding catheter.
- Patented hydrophilic coating on distal shaft and Hypotube proximal shaft provide good deliverability.
- Three-directional memory folding of the balloon allows of size minimization with great withdrawal capability, and ensures the good performance of repeated dilatation.
- Soft tapered tip provides smooth transition from guidewire to balloon catheter to avoid “fish mouth”, and minimize the vessel damage.
- Short shoulder design at both ends of the balloon ensures the precise dilatation, and reduces the damage to normal vessel next to the lesion.

Tadpole™
Coronary Dilatation
Catheter



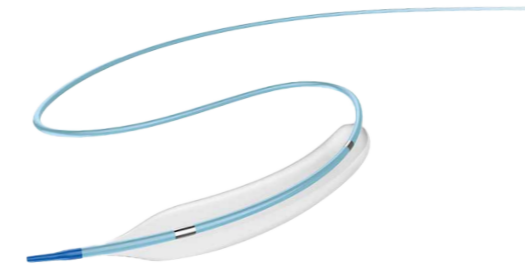
Technical Parameters

Catheter Design	Rapid Exchange
Balloon Compliance	Semi-compliant
Marker	2
Distal Shaft O.D.	2.7F
Proximal Shaft O.D.	1.9F
Tip Profile	0.017"
Minimum Guiding Catheter Compatibility	No less than 5F (0.056")
Guide Wire Compatibility	0.014"
Effective Length	142cm
Nominal Pressure	8 atm (φ2.25mm-3.0mm) / 6 atm (φ3.25mm-4.0mm)
Rated Burst Pressure	16 atm (φ2.25mm-3.75mm) / 14 atm (φ4.0mm)

Ordering Information

Balloon Diameter (mm)	Balloon Length (mm)						
	8	10	12	15	20	25	30
2.5	LPCR 25008	LPCR 25010	LPCR 25012	LPCR 25015	LPCR 25020	LPCR 25025	LPCR 25030
2.75	LPCR 27008	LPCR 27010	LPCR 27012	LPCR 27015	LPCR 27020	LPCR 27025	LPCR 27030
3.0	LPCR 30008	LPCR 30010	LPCR 30012	LPCR 30015	LPCR 30020	LPCR 30025	LPCR 30030
3.5	LPCR 35008	LPCR 35010	LPCR 35012	LPCR 35015	LPCR 35020	LPCR 35025	LPCR 35030
4.0	LPCR 40008	LPCR 40010	LPCR 40012	LPCR 40015	LPCR 40020	LPCR 40025	LPCR 40030

Notice: The sizes with * mark require a minimum quantity of 10 pcs per order. Please contact local sales for details before placing order.



Features:

- Strong radial strength with high RBP (22 atm) contributes to excellent stent apposition for post-dilatation.
- Patented hydrophilic coating on distal shaft provides good deliverability.
- Three-directional memory folding of the balloon allows of size minimization with great withdrawal capability, and ensures the good performance of repeated dilatation.
- Soft tapered tip provides smooth transition from guidewire to balloon catheter to avoid “fish mouth”, and minimize the vessel damage.
- Short shoulder design at both ends of the balloon ensures the precise dilatation, and reduces the damage to normal vessel next to the lesion.

NC Tadpole™
Coronary Dilatation
Catheter



Technical Parameters

Material	Nylon
Catheter Design	Rapid Exchange
Balloon Compliance	Non-compliant
Marker	2
Distal Shaft O.D.	2.7F
Proximal Shaft O.D.	2.3F
Tip Profile	0.018"
Minimum Guiding Catheter Compatibility	No less than 5F (0.056")
Guide Wire Compatibility	0.014"
Effective Length	135cm
Nominal Pressure	14 atm
Rated Burst Pressure	22 atm

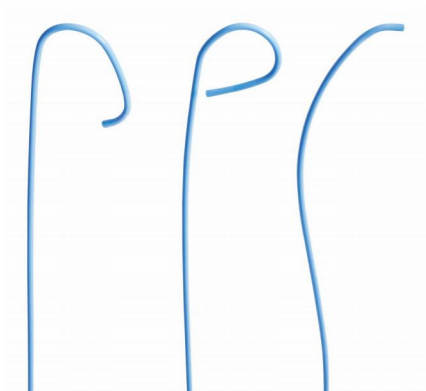
Ordering Information

Balloon Diameter (mm)	Balloon Length (mm)							
	6	8	10	12	15	20	25	30
1.5	LPNRX15006	LPNRX15008	LPNRX15010	LPNRX15012	LPNRX15015	LPNRX15020	LPNRX15025*	LPNRX15030*
2.0	LPNRX20006	LPNRX20008	LPNRX20010	LPNRX20012	LPNRX20015	LPNRX20020	LPNRX20025	LPNRX20030
2.25	LPNRX22006	LPNRX22008	LPNRX22010	LPNRX22012	LPNRX22015	LPNRX22020	LPNRX22025	LPNRX22030
2.5	LPNRX25006	LPNRX25008	LPNRX25010	LPNRX25012	LPNRX25015	LPNRX25020	LPNRX25025	LPNRX25030
2.75	LPNRX27006	LPNRX27008	LPNRX27010	LPNRX27012	LPNRX27015	LPNRX27020	LPNRX27025	LPNRX27030
3.0	LPNRX30006	LPNRX30008	LPNRX30010	LPNRX30012	LPNRX30015	LPNRX30020	LPNRX30025	LPNRX30030
3.25	LPNRX32006	LPNRX32008	LPNRX32010	LPNRX32012	LPNRX32015	LPNRX32020	LPNRX32025	LPNRX32030
3.5	LPNRX35006	LPNRX35008	LPNRX35010	LPNRX35012	LPNRX35015	LPNRX35020	LPNRX35025	LPNRX35030
3.75	LPNRX37006	LPNRX37008	LPNRX37010	LPNRX37012	LPNRX37015	LPNRX37020	LPNRX37025	LPNRX37030
4.0	LPNRX40006	LPNRX40008	LPNRX40010	LPNRX40012	LPNRX40015	LPNRX40020	LPNRX40025	LPNRX40030
4.5	LPNRX45006*	LPNRX45008	LPNRX45010	LPNRX45012	LPNRX45015	LPNRX45020	LPNRX45025*	LPNRX45030*
5.0	LPNRX50006	LPNRX50008	LPNRX50010	LPNRX50012	LPNRX50015	LPNRX50020	LPNRX50025	LPNRX50030

*Notice: Please contact local sales for details before placing order.

03 Catheters

- 17 Angiographic Catheter
- 19 Orien™ Guiding Catheter CE
- 21 Thromsweeper™ Thrombus Extraction Catheter
- 22 Deliver™ Infusion Catheter



Angiographic Catheter

Features:

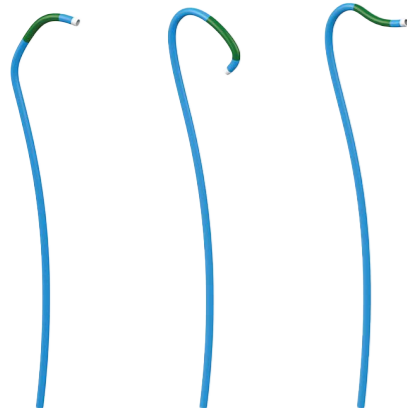
- Smooth external wall provides great crossability through tortuous vasculature.
- PTFE internal wall provides smooth lumen to ensure the excellent trackability.
- The middle layer of braided stainless steel mesh guarantees outstanding torque transmission and kink resistance.
- Large lumen diameter allows of high flow rate of contrast agent.

Ordering Information*

Catalogue No.	Outer Diameter	Effective Length (cm)	Hole Count (ea)	Distal Shape
LPS00040100	4F	100	0	Straight
LPS00050100	5F	100	0	Straight
LPS00060100	6F	100	0	Straight
LPJL35040100	4F	100	0	JL3.5
LPJL40040100	4F	100	0	JL4.0
LPJL45040100	4F	100	0	JL4.5
LPJL50040100	4F	100	0	JL5.0
LPJL60040100	4F	100	0	JL6.0
LPJL35050100	5F	100	0	JL3.5
LPJL40050100	5F	100	0	JL4.0
LPJL45050100	5F	100	0	JL4.5
LPJL50050100	5F	100	0	JL5.0
LPJL60050100	5F	100	0	JL6.0
LPJL35060100	6F	100	0	JL3.5
LPJL40060100	6F	100	0	JL4.0
LPJL45060100	6F	100	0	JL4.5
LPJL50060100	6F	100	0	JL5.0
LPJL60060100	6F	100	0	JL6.0
LPJR35040100	4F	100	0	JR3.5
LPJR40040100	4F	100	0	JR4.0
LPJR50040100	4F	100	0	JR5.0
LPJR60040100	4F	100	0	JR6.0
LPJR35050100	5F	100	0	JR3.5
LPJR40050100	5F	100	0	JR4.0
LPJR50050100	5F	100	0	JR5.0
LPJR60050100	5F	100	0	JR6.0
LPJR35060100	6F	100	0	JR3.5
LPJR40060100	6F	100	0	JR4.0
LPJR40060125	6F	125	0	JR4.0
LPJR50060100	6F	100	0	JR5.0
LPJR60060100	6F	100	0	JR6.0

Catalogue No.	Outer Diameter	Effective Length (cm)	Hole Count (ea)	Distal Shape
LPP80640110	4F	110	6	PIG-80
LPP45640110	4F	110	6	PIG-145
LPP55640110	4F	110	6	PIG-155
LPP80650110	5F	110	6	PIG-80
LPP45650110	5F	110	6	PIG-145
LPP55650110	5F	110	6	PIG-155
LPP80660110	6F	110	6	PIG-80
LPP45660110	6F	110	6	PIG-145
LPP55660110	6F	110	6	PIG-155
LPAL10040100	4F	100	0	AL1.0
LPAL20040100	4F	100	0	AL2.0
LPAL30040100	4F	100	0	AL3.0
LPAL10050100	5F	100	0	AL1.0
LPAL20050100	5F	100	0	AL2.0
LPAL30050100	5F	100	0	AL3.0
LPAL10060100	6F	100	0	AL1.0
LPAL20060100	6F	100	0	AL2.0
LPAL30060100	6F	100	0	AL3.0
LPAR10040100	4F	100	0	AR1.0
LPAR20040100	4F	100	0	AR2.0
LPAR30040100	4F	100	0	AR3.0
LPAR10050100	5F	100	0	AR1.0
LPAR20050100	5F	100	0	AR2.0
LPAR30050100	5F	100	0	AR3.0
LPAR10060100	6F	100	0	AR1.0
LPAR20060100	6F	100	0	AR2.0
LPAR30060100	6F	100	0	AR3.0
LPRCB00040100	4F	100	0	RCB
LPRCB00050100	5F	100	0	RCB
LPRCB00060100	6F	100	0	RCB
LPLCB00040100	4F	100	0	LCB
LPLCB00050100	5F	100	0	LCB
LPLCB00060100	6F	100	0	LCB
LPIM00040100	4F	100	0	IM
LPIM00050100	5F	100	0	IM
LPIM00060100	6F	100	0	IM
LPC00040100	4F	100	0	TIG
LPC00050100	5F	100	0	TIG
LPC00060100	6F	100	0	TIG

* Notice: Please contact local sales for details before placing order.







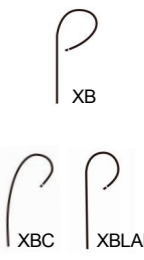
Orien™
Guiding Catheter
CE

Features:

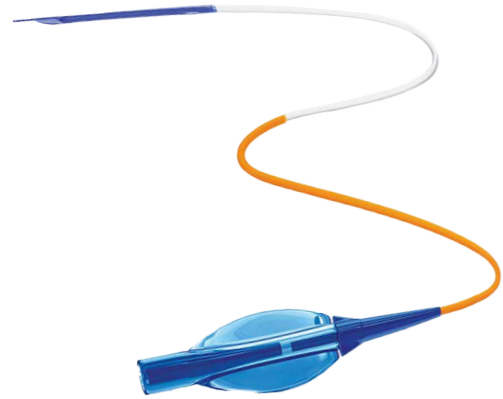
- Flat wire braided middle layer offers outstanding flexibility and excellent kink resistance.
- Robust secondary curve provides great backup support and curve retention.
- Soft and flexible tip minimize the damage to the vessel wall.
- PTFE internal wall provides smooth lumen to ensure the excellent trackability.
- Large lumen guarantees the good performance for kissing balloon.

Ordering Information*

Right Coronary Curves						
Curve Type	Catalogue No.	Distal End Shape	Catheter O.D.	Catheter I.D.	Length (cm)	
Judkins Right	CL5JR35	JR 3.5	5F	0.056"	100	
	CL5JR40	JR 4.0				
	CL6JR35	JR 3.5	6F	0.070"		
	CL6JR40	JR 4.0				
	CL7JR35	JR 3.5	7F	0.078"		
	CL7JR40	JR 4.0				
Amplatz Right	CL5AR10	AR 1.0	5F	0.056"	100	
	CL5AR20	AR 2.0				
	CL6AR10	AR 1.0	6F	0.070"		
	CL6AR20	AR 2.0				
	CL7AR10	AR 1.0	7F	0.078"		
	CL7AR20	AR 2.0				

Left Coronary Curves						
Curve Type	Catalogue No.	Distal End Shape	Catheter O.D.	Catheter I.D.	Length (cm)	
Judkins Left	CL5JL35	JL 3.5	5F	0.056"	100	
	CL5JL40	JL 4.0				
	CL5JL45*	JL 4.5				
	CL5JL50*	JL 5.0				
	CL6JL35	JL 3.5	6F	0.070"		
	CL6JL40	JL 4.0				
	CL6JL45*	JL 4.5				
	CL6JL50*	JL 5.0				
	CL7JL35	JL 3.5	7F	0.078"		
	CL7JL40	JL 4.0				
	CL7JL45*	JL 4.5				
	CL7JL50*	JL 5.0				
Amplatz Left	CL5AL075	AL 0.75	5F	0.056"	100	
	CL5AL10	AL 1.0				
	CL5AL20	AL 2.0				
	CL6AL075	AL 0.75	6F	0.070"		
	CL6AL10	AL 1.0				
	CL6AL20	AL 2.0	7F	0.078"		
	CL7AL075	AL 0.75				
	CL7AL10	AL 1.0				
Extra Backup	CL5XB30	XB 3.0	5F	0.056"	100	
	CL5XB35	XB 3.5				
	CL5XB40	XB 4.0				
	CL6XB30	XB 3.0	6F	0.070"		
	CL6XB35	XB 3.5				
	CL6XB40	XB 4.0				
	CL6XBC30	XBC 3.0				
	CL6XBC35	XBC 3.5	7F	0.078"		
	CL6XBLAD35	XBLAD 3.5				
	CL7XB30	XB 3.0				
	CL7XB35	XB 3.5				
	CL7XB40	XB 4.0				
	CL7XBLAD35	XBLAD 3.5				

*Notice: Please contact local sales for more specifications before placing order.



Thrombsweeper™

Thrombus Extraction Catheter

Features:

- Large suction lumen minimizes the flow resistance and boosts the extraction performance.
- Low crossing profile is designed for the compatibility with the smallest 6F guiding catheter.
- Hydrophilic coating on distal shaft provides great crossability and deliverability.
- Embedded Platinum marker empowers smooth-feeling of delivery and visualization.
- Removable support-wire helps rapidly and easily reach to the lesion.

Technical Parameters

Design		Rapid Exchange
Guiding Catheter Compatibility (minimum)		6F (0.070")
Guide Wire Compatibility		0.014"
Effective Length		1450mm
Extraction Lumen Area		1.03mm ²
Guide wire Lumen Length		113mm
Catheter O.D.	Proximal	1.27mm
	Distal	1.50mm

Ordering Information

Catalogue No.	Specification
XS500001	150



Deliver™

Infusion Catheter

Features:

- Combined liquid perfusion lumen and guide wire lumen fulfills the perfusion to target lesion without withdrawing the guide wire.
- Rapid exchange design, convenient for operation.
- Pt-Ir marker provides excellent visibility under X-ray.

Technical Parameters

Material	Stainless steel filmed with Nylon
Marker	Pt-Ir Alloy
Tip O.D.	1.5F (0.50mm)
Distal O.D.	3.3F (1.09mm)
Proximal O.D.	3.1F (1.03mm)
Guide Wire Lumen I.D.	0.015" (0.38mm)
Effective Length	1390mm
Guiding Catheter Compatibility	5F/ 6F/ 7F
Guide Wire Compatibility	0.014"

Ordering Information

Catalogue No.	Specification
LPRX139	

04 / Guide Wires



- 25 Angiographic Guide Wire
- 26 Ultraskin™ Hydrophilic Guide Wire CE FDA
- 27 Balancium™ Guide Wire CE

**Features:**

- Stainless steel core wire offers excellent torque transmission and kink resistance.
- Over-the-wire coil offers outstanding deliverability and radiopacity.

Angiographic Guide Wire

Ordering Information

Catalogue No.	Tip Shape	Outer Diameter	Length (cm)	Type
MMNSF35150	Straight	0.035"	150	Teflon coating, coiled
MMNSF35260	Straight	0.035"	260	Teflon coating, coiled
MMNJF35150	J	0.035"	150	Teflon coating, coiled
MMNJF35260	J	0.035"	260	Teflon coating, coiled
MMNSF38150	Straight	0.038"	150	Teflon coating, coiled
MMNSF38260	Straight	0.038"	260	Teflon coating, coiled
MMNJF38150	J	0.038"	150	Teflon coating, coiled
MMNJF38260	J	0.038"	260	Teflon coating, coiled

Notice: Please contact local sales for more specifications before placing order.

**Features:**

- Nitinol core wire guarantees great tip shape retention, outstanding kink resistance and 1:1 torque control.
- PU Jacket incorporated with tungsten provides highly radiopacity.
- Super smooth hydrophilic coating reduces friction, and provides excellent navigation in and out the catheter.
- Soft tapered tip increases distal flexibility, contributes to smooth vessel insertion, and minimizes the risk of trauma.

Ultraskin™ Hydrophilic Guide Wire

**Ordering Information**

Catalogue No.	Outer Diameter	Guide Wire Length (cm)	Distal Curve	Note
SD-S18150	0.018"	150	Straight	Standard
SD-A18150	0.018"	150	135° Angled	Standard
SD-S32150	0.032"	150	Straight	Standard
SD-A32150	0.032"	150	135° Angled	Standard
SD-S32180	0.032"	180	Straight	Standard
SD-A32180	0.032"	180	135° Angled	Standard
SD-S32260	0.032"	260	Straight	Standard
SD-A32260	0.032"	260	135° Angled	Standard
SD-S35150	0.035"	150	Straight	Standard
SD-A35150	0.035"	150	135° Angled	Standard
SD-S35180	0.035"	180	Straight	Standard
SD-A35180	0.035"	180	135° Angled	Standard
SD-S35260	0.035"	260	Straight	Standard
SD-A35260	0.035"	260	135° Angled	Standard
SP-S35150	0.035"	150	Straight	Reshapable Tip
SP-A35150	0.035"	150	135° Angled	Reshapable Tip
SP-S35180	0.035"	180	Straight	Reshapable Tip
SP-A35180	0.035"	180	135° Angled	Reshapable Tip
ST-S35150	0.035"	150	Straight	Stiff Shaft
ST-A35150	0.035"	150	135° Angled	Stiff Shaft



Balancium™

PTCA Guide Wire

CE

Shaping Ribbon

Core-to-Tip



Two Types of Core Design for Different Clinical Needs

- **Core-to-Tip** design provides great tip stiffness, good touch feedback and moderate support for easy control and better crossability and accessibility.
- **Shaping Ribbon** design provides softer tip stiffness for minimized damage to the vessels, and outstanding tip shaping flexibility and stability for easy navigation.
- Nitinol + stainless steel cores provide superior flexibility and durability, improves the torque response.
- 3cm Platinum coil at distal tip provides excellent radiopacity.
- A hydrophilic coating is applied to the 30cm coiled distal end to increase the crossability and deliverability.
- PTFE coating on middle and proximal parts reduces friction, and improves pushability and catheter trackability.

Ordering Information

Core-to-Tip						
Catalogue No.	Outer Diameter	Length (cm)	Tip Flexibility	Tip Shape	Core Material	Radial Support
GW B185-0	0.014"	185	Floppy (0.6g)	Straight	NiTi + SS	Moderate
GW B185-0J	0.014"	185	Floppy (0.6g)	J	NiTi + SS	Moderate
GW B300-0	0.014"	300	Floppy (0.6g)	Straight	NiTi + SS	Moderate
GW B300-0J	0.014"	300	Floppy (0.6g)	J	NiTi + SS	Moderate
GW B185-1	0.014"	185	Super soft (1g)	Straight	NiTi + SS	Moderate
GW B185-1J	0.014"	185	Super soft (1g)	J	NiTi + SS	Moderate
GW B300-1	0.014"	300	Super soft (1g)	Straight	NiTi + SS	Moderate
GW B300-1J	0.014"	300	Super soft (1g)	J	NiTi + SS	Moderate
GW B185-2	0.014"	185	Soft (2g)	Straight	NiTi + SS	Moderate
GW B185-2J	0.014"	185	Soft (2g)	J	NiTi + SS	Moderate
GW B300-2	0.014"	300	Soft (2g)	Straight	NiTi + SS	Moderate
GW B300-2J	0.014"	300	Soft (2g)	J	NiTi + SS	Moderate

Shaping Ribbon

Catalogue No.	Outer Diameter	Length (cm)	Tip Flexibility	Tip Shape	Core Material	Radial Support
GW B185-S0	0.014"	185	Floppy (0.6g)	Straight	NiTi + SS	Moderate
GW B185-S0J	0.014"	185	Floppy (0.6g)	J	NiTi + SS	Moderate
GW B300-S0	0.014"	300	Floppy (0.6g)	Straight	NiTi + SS	Moderate
GW B300-S0J	0.014"	300	Floppy (0.6g)	J	NiTi + SS	Moderate
GW B185-S1	0.014"	185	Super soft (1g)	Straight	NiTi + SS	Moderate
GW B185-S1J	0.014"	185	Super soft (1g)	J	NiTi + SS	Moderate
GW B300-S1	0.014"	300	Super soft (1g)	Straight	NiTi + SS	Moderate
GW B300-S1J	0.014"	300	Super soft (1g)	J	NiTi + SS	Moderate
GW B185-S2	0.014"	185	Soft (2g)	Straight	NiTi + SS	Moderate
GW B185-S2J	0.014"	185	Soft (2g)	J	NiTi + SS	Moderate
GW B300-S2	0.014"	300	Soft (2g)	Straight	NiTi + SS	Moderate
GW B300-S2J	0.014"	300	Soft (2g)	J	NiTi + SS	Moderate

05

Introducer Sheaths

- 29 Shoocin™ Introducer Kit CE FDA
31 Brilliant™ Introducer Kit CE FDA



Shoocin™

Introducer Kit



Features:

- Advanced material improves bendability and flexibility without gapping or kinking.
- Special designed lock and silicon hemostatic valve provide outstanding hemostatic function, while guaranteeing the operational ability for the catheter.
- Smooth tapered tip helps with easy access to the artery, reducing trauma to patients.
- Smooth transition from dilator to sheath greatly reduces puncture resistance, providing easy and non-traumatic insertion.
- Minimized possibility of damaging tissue upon sheath entry, advancement and withdrawal, providing smoother and easier vascular access even through difficult access sites.

Full kit includes:

- Introducer Sheath (1)
- Dilator (1)
- Stainless Steel Guide Wire (1)
- Introducer Needle (1)
- Scalpel (1)
- Syringe (1)

The Introducer Kit can be customized by:

- Components include guidewire, introducer needle, scalpel, syringe are optional based on request.
- Guide wire provides two types: stainless steel guide wire, hydrophilic guide wire (Radial Sheath).
- Guide wire tip: straight (Radial Sheath) , J tip (Femoral Sheath), 135 angled (Femoral Sheath).
- Introducer needle(IN) or intravascular catheter (IC) is optional.

* For Hydrophilic guide wire(Radial Sheath), IC is mandatory set.

* For stainless steel guide wire, IN is mandatory set.

Ordering Information*

Long Sheath								
Catalogue No. (Stainless Steel Guide Wire)	Sheath I.D.	Sheath Length	Guide Wire Diameter	Guide Wire Length	Introducer Needle	Scalpel	Syringe	
LS061638-SJ70-IN18-K-S	6F	16cm	0.038"	70cm	18G	1	1	
LS062338-SJ70-IN18-K-S	6F	23cm	0.038"	70cm	18G	1	1	
LS071638-SJ70-IN18-K-S	7F	16cm	0.038"	70cm	18G	1	1	
LS072338-SJ70-IN18-K-S	7F	23cm	0.038"	70cm	18G	1	1	
LS081638-SJ70-IN18-K-S	8F	16cm	0.038"	70cm	18G	1	1	
LS082338-SJ70-IN18-K-S	8F	23cm	0.038"	70cm	18G	1	1	

* The Yellow Marks indicate the components which can be customized as mentioned before. (e.g. radial sheath/6F/7cm, 0.021" straight stainless steel guide wire/45cm, 20G introducer needle, without scalpel and syringe: RS060721-SS45-IN20)

Other specifications are available on special demand. Please contact your Lepu local representatives for more details

Radial Sheath

Catalogue No. (Stainless Steel Guide Wire)	Sheath I.D.	Sheath Length	Guide Wire Diameter	Guide Wire Length	Introducer Needle	Scalpel	Syringe
RS040518-SS45-IN20-K-S	4F	5cm	0.018"	45cm	20G	1	1
RS040521-SS45-IN20-K-S	4F	5cm	0.021"	45cm	20G	1	1
RS040525-SS45-IN20-K-S	4F	5cm	0.025"	45cm	20G	1	1
RS040718-SS45-IN20-K-S	4F	7cm	0.018"	45cm	20G	1	1
RS040721-SS45-IN20-K-S	4F	7cm	0.021"	45cm	20G	1	1
RS040725-SS45-IN20-K-S	4F	7cm	0.025"	45cm	20G	1	1
RS050518-SS45-IN20-K-S	5F	5cm	0.018"	45cm	20G	1	1
RS050521-SS45-IN20-K-S	5F	5cm	0.021"	45cm	20G	1	1
RS050525-SS45-IN20-K-S	5F	5cm	0.025"	45cm	20G	1	1
RS050718-SS45-IN20-K-S	5F	7cm	0.018"	45cm	20G	1	1
RS050721-SS45-IN20-K-S	5F	7cm	0.021"	45cm	20G	1	1
RS050725-SS45-IN20-K-S	5F	7cm	0.025"	45cm	20G	1	1
RS060518-SS45-IN20-K-S	6F	5cm	0.018"	45cm	20G	1	1
RS060521-SS45-IN20-K-S	6F	5cm	0.021"	45cm	20G	1	1
RS060525-SS45-IN20-K-S	6F	5cm	0.025"	45cm	20G	1	1
RS060718-SS45-IN20-K-S	6F	7cm	0.018"	45cm	20G	1	1
RS060721-SS45-IN20-K-S	6F	7cm	0.021"	45cm	20G	1	1
RS060725-SS45-IN20-K-S	6F	7cm	0.025"	45cm	20G	1	1
RS041121-SS45-IN20-K-S	4F	11cm	0.021"	45cm	20G	1	1
RS042421-SS70-IN20-K-S	4F	24cm	0.021"	70cm	20G	1	1
RS051121-SS45-IN20-K-S	5F	11cm	0.021"	45cm	20G	1	1
RS052421-SS70-IN20-K-S	5F	24cm	0.021"	70cm	20G	1	1
RS061121-SS45-IN20-K-S	6F	11cm	0.021"	45cm	20G	1	1
RS062421-SS70-IN20-K-S	6F	24cm	0.021"	70cm	20G	1	1
RS070521-SS45-IN20-K-S	7F	5cm	0.021"	45cm	20G	1	1
RS070521-SS70-IN20-K-S	7F	5cm	0.021"	70cm	20G	1	1
RS071121-SS45-IN20-K-S	7F	11cm	0.021"	45cm	20G	1	1
RS072421-SS70-IN20-K-S	7F	24cm	0.021"	70cm	20G	1	1
RS070718-SS45-IN20-K-S	7F	7cm	0.018"	45cm	20G	1	1
RS070718-SS70-IN20-K-S	7F	7cm	0.018"	70cm	20G	1	1
RS071118-SS45-IN20-K-S	7F	11cm	0.018"	45cm	20G	1	1
RS071118-SS70-IN20-K-S	7F	11cm	0.018"	70cm	20G	1	1

Femoral Sheath

Catalogue No. (Stainless Steel Guide Wire)	Sheath I.D.	Sheath Length	Guide Wire Diameter	Guide Wire Length	Introducer Needle	Scalpel	Syringe
FS040525-SS45-IN20-K-S	4F	5cm	0.025"	45cm	20G	1	1
FS041125-SS45-IN20-K-S	4F	11cm	0.025"	45cm	20G	1	1
FS041135-SJ45-IN18-K-S	4F	11cm	0.035"	45cm	18G	1	1
FS050535-SJ45-IN18-K-S	5F	5cm	0.035"	45cm	18G	1	1
FS050538-SJ45-IN18-K-S	5F	5cm	0.038"	45cm	18G	1	1
FS051135-SJ45-IN18-K-S	5F	11cm	0.035"	45cm	18G	1	1
FS051138-SJ45-IN18-K-S	5F	11cm	0.038"	45cm	18G	1	1
FS060535-SJ45-IN18-K-S	6F	5cm	0.035"	45cm	18G	1	1
FS060538-SJ45-IN18-K-S	6F	5cm	0.038"	45cm	18G	1	1
FS061135-SJ45-IN18-K-S	6F	11cm	0.035"	45cm	18G	1	1
FS061138-SJ45-IN18-K-S	6F	11cm	0.038"	45cm	18G	1	1
FS070535-SJ45-IN18-K-S	7F	5cm	0.035"	45cm	18G	1	1
FS070538-SJ45-IN18-K-S	7F	5cm	0.038"	45cm	18G	1	1
FS071135-SJ45-IN18-K-S	7F	11cm	0.035"	45cm	18G	1	1
FS071138-SJ45-IN18-K-S	7F	11cm	0.038"	45cm	18G	1	1
FS080535-SJ45-IN18-K-S	8F	5cm	0.035"	45cm	18G	1	1
FS080538-SJ45-IN18-K-S	8F	5cm	0.038"	45cm	18G	1	1
FS081135-SJ45-IN18-K-S	8F	11cm	0.035"	45cm	18G	1	1
FS081138-SJ45-IN18-K-S	8F	11cm	0.038"	45cm	18G	1	1
FS090538-SJ45-IN18-K-S	9F	5cm	0.038"	45cm	18G	1	1
FS091138-SJ45-IN18-K-S	9F	11cm	0.038"	45cm	18G	1	1

Advanced Type (Radial Sheaths)



Brilliant™

Introducer Kit



Features:

- Hydrophilic coated radial sheath and guidewire lead to smoother navigation and easier vascular access, reducing the risk of damage to the vessel.
- Advanced material improves bendability and flexibility without gapping or kinking.
- Special designed lock and silicon hemostatic valve provide outstanding hemostatic function, while guaranteeing the operational ability for the catheter.
- Smooth tapered tip helps with easy access to the artery, reducing trauma to the patients.
- Smooth transition from dilator to sheath greatly reduces puncture resistance, providing easy and non-traumatic insertion.

Full kit includes:

Introducer Sheath (1)
Dilator (1)
Hydrophilic Guide Wire (1)
Intravascular Catheter (1)
Scalpel (1)
Syringe (1)

The Introducer Kit can be customized by:

- Remove the every single component includes guide wire, intravascular catheter (IC), scalpel (K) and syringe (S).
- Replace the hydrophilic guide wire (straight HS) into stainless steel guide wire (straight SS).
- Replace the intravascular catheter (IC) into introducer needle (IN). Intravascular catheter is mandatory to be a set with hydrophilic guide wire.

Please contact the sales for more information about the selections of customized kit.

* The Yellow Marks indicate the components which can be customized as mentioned before.
(e.g. radial sheath/6F/7cm, 0.021" straight stainless steel guide wire/45cm,
20G introducer needle, without scalpel and syringe: RS060721-SS45-IN20)

Please contact the sales for detailed catalogue numbers of customized kits.

Ordering Information*

Radial Sheath							
Catalogue No. (Hydrophilic Guide Wire)	Sheath I.D.	Sheath Length	Guide Wire Diameter	Guide Wire Length	Intravascular Catheter	Scalpel	Syringe
RSC040521-HS45-IC22-K-S	4F	5 cm	0.021"	45 cm	22G	1	1
RSC040525-HS45-IC20-K-S	4F	5 cm	0.025"	45 cm	20G	1	1
RSC040721-HS45-IC22-K-S	4F	7 cm	0.021"	45 cm	22G	1	1
RSC040725-HS45-IC20-K-S	4F	7 cm	0.025"	45 cm	20G	1	1
RSC041121-HS45-IC22-K-S	4F	11 cm	0.021"	45 cm	22G	1	1
RSC041125-HS45-IC20-K-S	4F	11 cm	0.025"	45 cm	20G	1	1
RSC041621-HS70-IC22-K-S	4F	16 cm	0.021"	70 cm	22G	1	1
RSC041625-HS70-IC20-K-S	4F	16 cm	0.025"	70 cm	20G	1	1
RSC042421-HS70-IC22-K-S	4F	24 cm	0.021"	70 cm	22G	1	1
RSC042425-HS70-IC20-K-S	4F	24 cm	0.025"	70 cm	20G	1	1
RSC050521-HS45-IC22-K-S	5F	5 cm	0.021"	45 cm	22G	1	1
RSC050525-HS45-IC20-K-S	5F	5 cm	0.025"	45 cm	20G	1	1
RSC050721-HS45-IC22-K-S	5F	7 cm	0.021"	45 cm	22G	1	1
RSC050725-HS45-IC20-K-S	5F	7 cm	0.025"	45 cm	20G	1	1
RSC051121-HS45-IC22-K-S	5F	11 cm	0.021"	45 cm	22G	1	1
RSC051125-HS45-IC20-K-S	5F	11 cm	0.025"	45 cm	20G	1	1
RSC051621-HS70-IC22-K-S	5F	16 cm	0.021"	70 cm	22G	1	1
RSC051625-HS70-IC20-K-S	5F	16 cm	0.025"	70 cm	20G	1	1
RSC052421-HS70-IC22-K-S	5F	24 cm	0.021"	70 cm	22G	1	1
RSC052425-HS70-IC20-K-S	5F	24 cm	0.025"	70 cm	20G	1	1
RSC060521-HS45-IC22-K-S	6F	5 cm	0.021"	45 cm	22G	1	1
RSC060525-HS45-IC20-K-S	6F	5 cm	0.025"	45 cm	20G	1	1
RSC060721-HS45-IC22-K-S	6F	7 cm	0.021"	45 cm	22G	1	1
RSC060725-HS45-IC20-K-S	6F	7 cm	0.025"	45 cm	20G	1	1
RSC061121-HS45-IC22-K-S	6F	11 cm	0.021"	45 cm	22G	1	1
RSC061125-HS45-IC20-K-S	6F	11 cm	0.025"	45 cm	20G	1	1
RSC061621-HS70-IC22-K-S	6F	16 cm	0.021"	70 cm	22G	1	1
RSC061625-HS70-IC20-K-S	6F	16 cm	0.025"	70 cm	20G	1	1
RSC062421-HS70-IC22-K-S	6F	24 cm	0.021"	70 cm	22G	1	1
RSC062425-HS70-IC20-K-S	6F	24 cm	0.025"	70 cm	20G	1	1
RSC070521-HS45-IC22-K-S	7F	5 cm	0.021"	45 cm	22G	1	1
RSC070525-HS45-IC20-K-S	7F	5 cm	0.025"	45 cm	20G	1	1
RSC070721-HS45-IC22-K-S	7F	7 cm	0.021"	45 cm	22G	1	1
RSC070725-HS45-IC20-K-S	7F	7 cm	0.025"	45 cm	20G	1	1
RSC071121-HS45-IC22-K-S	7F	11 cm	0.021"	45 cm	22G	1	1
RSC071125-HS45-IC20-K-S	7F	11 cm	0.025"	45 cm	20G	1	1
RSC071621-HS70-IC22-K-S	7F	16 cm	0.021"	70 cm	22G	1	1
RSC071625-HS70-IC20-K-S	7F	16 cm	0.025"	70 cm	20G	1	1
RSC072421-HS70-IC22-K-S	7F	24 cm	0.021"	70 cm	22G	1	1
RSC072425-HS70-IC20-K-S	7F	24 cm	0.025"	70 cm	20G	1	1

06 Accessories



- 35 Rayband™ Radial Artery Compression Tourniquet CE FDA
- 36 Angioway™ Y-Hemostasis Valve Set CE FDA
- 37 Angiopower™ Inflation Device CE FDA
- 38 Inflation Devices Kit CE FDA
- 39 Angioway™ Manifolds CE
- 40 Angioway™ High Pressure Extension Tubings CE
- 41 Introducer Needle
- 42 Angiospring™ Angiography Control Syringe CE
- 43 Contrast Medium Injection Manifold Kits CE

**Features:**

- Specially designed for radial artery hemostasis of post percutaneous puncture.
- Transparent material ensures clear visual control of hemostasis procedure.
- Unilateral valve connected to the balloon allows of accurate pressure adjustment to provide personalized hemostasis procedure.
- Adjustable band length is convenient to fit for patient's comfort.
- Stopcock on syringe helps with easy and accurate deflation.

Rayband™**Radial Artery
Compression Tourniquet****Ordering Information**

Catalogue No.	Balloon Structure	Bandage Length (cm)	Max Injection Air Volume (mL)	Connector
LPYP15S	1	21	15	Push-pull
LPYP15	1	24.5	15	Push-pull
LPYP15L	1	27	15	Push-pull
LPYP15XL	1	29	15	Push-pull
LPYP20S	2	21	20	Push-pull
LPYP20	2	24.5	20	Push-pull
LPYP20L	2	27	20	Push-pull
LPYP20XL	2	29	20	Push-pull
YPR15S	1	21	15	Luer
YPR15	1	24.5	15	Luer
YPR15L	1	27	15	Luer
YPR15XL	1	29	15	Luer
YPR20S	2	21	20	Luer
YPR20	2	24.5	20	Luer
YPR20L	2	27	20	Luer
YPR20XL	2	29	20	Luer

**Angioway™****Y-Hemostasis
Valve Set****Features:**

- Effectively minimize blood loss and provide a smooth channel for interventional device delivery.
- Easy push-pull mechanism allows to operate with one hand.

Whole set package includes:

Y-valve (1)
Guide Wire Torquer (1)
Guide Wire Introducer (1)

Technical Parameters

Connector Type	Push-Pull / Rotating
Inner Diameter	0.118" (3.0mm)
Body Material	Polycarbonate
Extension Tubing	Optional
Sterilization	ETO

Ordering Information

Catalogue No.	Connector Type	Package Type	Length of the Extension Tubing (cm)
YNP	Push-Pull	Whole set	/
YNP20	Push-Pull	Whole set	20
YNP25	Push-Pull	Whole set	25
YNP40	Push-Pull	Whole set	40
YNP50	Push-Pull	Whole set	50
YNPH	Push-Pull	Y-valve only	/
YNP20H	Push-Pull	Y-valve only	20
YNP25H	Push-Pull	Y-valve only	25
YNP40H	Push-Pull	Y-valve only	40
YNP50H	Push-Pull	Y-valve only	50
YNR	Rotating	Whole set	/
YNRH	Rotating	Y-valve only	/

**Features:**

- Fluorescence clock face for clearer display.
- Smooth fine adjustment for accurate inflation.
- Barrier screw pivot provides precise pressure placement.
- The internal multi-buckle structure ensures more secure lock.
- Ergonomic grip fits comfortably in either hand.
- Petal-shaped handle ensures torque control without slipping.

Angiopower™

Inflation Device

**Technical Parameters**

Display	Analog/Fluorescent
Pressure	30 atm (440psi)
Barrel Volume	20mL
Stopcock	3-way 500psi
Extension Tubing	33cm, 1200psi, male rotating Luer connector

Catalogue No.	Inflation Range (atm)	Stopcock
LP-P-30	30	/
LP-P-30S	30	Included



Inflation Devices Kit

**Features:**

- Precise and stable pressure placement.
- Multi packages included meet various clinical demands.

Inflation Device Kit includes:

Inflation Device (1)
Y-Hemostasis Valve Set (1)

Ordering Information

Catalogue No.	Inflation Device Model		Y-Hemostasis Valve Set Model			
	Type	Inflation Range	Type	Mode	Contains	Extension Tubing
LP-P-30-YNP	LP-P-30	30atm	YNP	Push-Pull	Whole set	/
LP-P-30-YNP20	LP-P-30	30atm	YNP20	Push-Pull	Whole set	20cm
LP-P-30-YNP25	LP-P-30	30atm	YNP25	Push-Pull	Whole set	25cm
LP-P-30-YNP40	LP-P-30	30atm	YNP40	Push-Pull	Whole set	40cm
LP-P-30-YNP50	LP-P-30	30atm	YNP50	Push-Pull	Whole set	50cm
LP-P-30-YNPH	LP-P-30	30atm	YNPH	Push-Pull	Y-valve only	/
LP-P-30-YNP20H	LP-P-30	30atm	YNP20H	Push-Pull	Y-valve only	20cm
LP-P-30-YNP25H	LP-P-30	30atm	YNP25H	Push-Pull	Y-valve only	25cm
LP-P-30-YNP40H	LP-P-30	30atm	YNP40H	Push-Pull	Y-valve only	40cm
LP-P-30-YNP50H	LP-P-30	30atm	YNP50H	Push-Pull	Y-valve only	50cm
LP-P-30-YNR	LP-P-30	30atm	YNR	Rotating	Whole set	/
LP-P-30-YNRH	LP-P-30	30atm	YNRH	Rotating	Y-valve only	/
LP-P-30S-YNP	LP-P-30S	30atm	YNP	Push-Pull	Whole set	/
LP-P-30S-YNP20	LP-P-30S	30atm	YNP20	Push-Pull	Whole set	20cm
LP-P-30S-YNP25	LP-P-30S	30atm	YNP25	Push-Pull	Whole set	25cm
LP-P-30S-YNP40	LP-P-30S	30atm	YNP40	Push-Pull	Whole set	40cm
LP-P-30S-YNP50	LP-P-30S	30atm	YNP50	Push-Pull	Whole set	50cm
LP-P-30S-YNPH	LP-P-30S	30atm	YNPH	Push-Pull	Y-valve only	/
LP-P-30S-YNP20H	LP-P-30S	30atm	YNP20H	Push-Pull	Y-valve only	20cm
LP-P-30S-YNP25H	LP-P-30S	30atm	YNP25H	Push-Pull	Y-valve only	25cm
LP-P-30S-YNP40H	LP-P-30S	30atm	YNP40H	Push-Pull	Y-valve only	40cm
LP-P-30S-YNP50H	LP-P-30S	30atm	YNP50H	Push-Pull	Y-valve only	50cm
LP-P-30S-YNR	LP-P-30S	30atm	YNR	Rotating	Whole set	/
LP-P-30S-YNRH	LP-P-30S	30atm	YNRH	Rotating	Y-valve only	/

**Features:**

- Visible handle makes the flow control easy and accurate
- On / Off types are available for different user habits

Angioway™

Manifolds

**Technical Parameters**

Side Ports	One / Two / Three
Pressure	500psi
Valve Type	On / Off
Extension Tubing	Optional
Sterilization	ETO

Ordering Information

Catalogue No.	Pressure	Side Port	Valve Type	Extension Tubing
LPJD502N	500psi	2	On	/
LPJD502F	500psi	2	Off	/
LPJD503N	500psi	3	On	/
LPJD503F	500psi	3	Off	/
LPJD503NX	500psi	3	On	Included
LPJD503FX	500psi	3	Off	Included

**Features:**

- High pressure transparent material ensures the need for large flow
- Customized length is available

Angioway™

High Pressure Extension Tubings

**Technical Parameters**

Material	PVC/TPU
Inner Diameter	0.056" (1.44mm)
Pressure Resistance	1200psi
Sterilization	ETO

Ordering Information

Catalogue No.	Pressure	Length
LPJG30H	1200psi	30cm
LPJG60H	1200psi	60cm
LPJG90H	1200psi	90cm
LPJG120H	1200psi	120cm
LPJG150H	1200psi	150cm
LPJG180H	1200psi	180cm

**Features:**

The introducer needles are for different clinical use.

Introducer Needle

Ordering Information

Catalogue No.	Gauge	Guide Wire Compatibility	Working Length (mm)
MMN 1870	18	0.035"	70
MMN 2038	20	0.021"	38
MMNI 1870	18	0.038"	70

**Features:**

- Solid and smooth plunger with unique push button make it easy for operation
- Clear scale, accurate control of infusion volume
- Latex free

Angiospring™ Angiography Control Syringe

CE

Technical Parameters

Luer Connector Type	Rotating
Sterilization	ETO

Ordering Information

Catalogue No.	Connector Type	Nominal Capacity (mL)
LPHB112	Rotating	12



Contrast Medium Injection Manifold Kits

CE

Features:

- High pressure transparent material ensures the need for large flow

Contrast Medium Injection Manifold Kit includes:

- Manifold (1)
- Angiography Control Syringe (1)
- High Pressure Extension Tubing (1)
- Infusion set (2)

Ordering Information

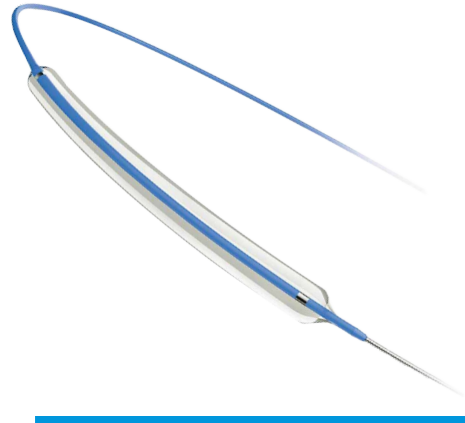
Catalogue No.	Manifold Model	Control Syringe Model	High Pressure Extension Tubing Model	Infusion Set Model	
MK-005	LPJD253N	LPHB112	LPJG30	IS-G-V	IS-G-V3
MK-006	LPJD253N	LPHB112	LPJG60	IS-G-V	IS-G-V3
MK-007	LPJD253N	LPHB112	LPJG90	IS-G-V	IS-G-V3
MK-008	LPJD253N	LPHB112	LPJG120	IS-G-V	IS-G-V3
MK-017	LPJD253F	LPHB112	LPJG30	IS-G-V	IS-G-V3
MK-018	LPJD253F	LPHB112	LPJG60	IS-G-V	IS-G-V3
MK-019	LPJD253F	LPHB112	LPJG90	IS-G-V	IS-G-V3
MK-020	LPJD253F	LPHB112	LPJG120	IS-G-V	IS-G-V3

07

Peripheral Interventional Products

PTA Balloon

- 45 Supercross™ PTA Balloon Dilatation Catheters CE
- 47 Angiocide™ Peripheral Cutting Balloon



Supercross™

PTA Balloon Dilatation Catheter



Features

- The flexible tapered tip ensures consistently smooth insertion and atraumatic navigation.
- Low crossing profile guarantees excellent crossability to pass through narrow lesions.
- Over the wire (OTW) design provides great torque control, kink resistance and pushability to ensure the outstanding deliverability.
- Dual-lumen shaft design of the OTW catheter separates the inflation lumen and guide wire lumen to ensure the rapid deflation performance.
- Special memory folding technique provides great withdrawal capability, and allows of repeated dilatation.

Technical Parameters

Catheter Design	Rapid Exchange (RX)
Balloon Compliance	Semi-compliant
Marker	2
Material	Nylon
Nominal Pressure	7 atm
Distal Shaft O.D.	2.8F
Proximal Shaft O.D.	2.3F
Lowest Crossing Profile	0.025"
Effective Length	135cm
Minimum Guiding Catheter Compatibility	5F (0.056")
Guide wire Compatibility	0.014"

Catheter Design	Over the Wire (OTW)
Balloon Compliance	Semi-compliant
Marker	2
Material	Nylon
Nominal Pressure	7 atm
Distal Shaft O.D.	5F
Lowest Crossing Profile	0.060"
Effective Length	80cm / 135cm
Minimum Introducer Sheath Compatibility	5F / 6F / 7F
Guide Wire Compatibility	0.035"

Ordering Information

Rapid Exchange							
Balloon Diameter (mm)	Balloon Length (mm)						
	20	30	40	60	80	100	120
1.5	PTAR15020	/	/	/	/	/	/
2.0	PTAR20020	PTAR20030	PTAR20040	PTAR20060	PTAR20080	PTAR20100	PTAR20120
2.5	PTAR25020	PTAR25030	PTAR25040	PTAR25060	PTAR25080	PTAR25100	PTAR25120
3.0	PTAR30020	PTAR30030	PTAR30040	PTAR30060	PTAR30080	PTAR30100	PTAR30120
3.5	PTAR35020	PTAR35030	PTAR35040	PTAR35060	PTAR35080	PTAR35100	PTAR35120
4.0	PTAR40020	PTAR40030	PTAR40040	PTAR40060	PTAR40080	PTAR40100	PTAR40120
4.5	PTAR45020	PTAR45030	PTAR45040	PTAR45060	PTAR45080	PTAR45100	PTAR45120
5.0	PTAR50020	PTAR50030	PTAR50040	PTAR50060	PTAR50080	PTAR50100	PTAR50120
5.5	PTAR55020	PTAR55030	PTAR55040	PTAR55060	PTAR55080	PTAR55100	PTAR55120
6.0	PTAR60020	PTAR60030	PTAR60040	PTAR60060	PTAR60080	PTAR60100	PTAR60120
7.0	PTAR70020	PTAR70030	PTAR70040	PTAR70060	PTAR70080	PTAR70100	PTAR70120

Over the Wire (Effective length is 80cm)							
Balloon Diameter (mm)	Balloon Length (mm)						
	20	30	40	60	80	100	120
3.0	PTAO30020	PTAO30030	PTAO30040	PTAO30060	PTAO30080	PTAO30100	PTAO30120
3.5	PTAO35020	PTAO35030	PTAO35040	PTAO35060	PTAO35080	PTAO35100	PTAO35120
4.0	PTAO40020	PTAO40030	PTAO40040	PTAO40060	PTAO40080	PTAO40100	PTAO40120
4.5	PTAO45020	PTAO45030	PTAO45040	PTAO45060	PTAO45080	PTAO45100	PTAO45120
5.0	PTAO50020	PTAO50030	PTAO50040	PTAO50060	PTAO50080	PTAO50100	PTAO50120
5.5	PTAO55020	PTAO55030	PTAO55040	PTAO55060	PTAO55080	PTAO55100	PTAO55120
6.0	PTAO60020	PTAO60030	PTAO60040	PTAO60060	PTAO60080	PTAO60100	PTAO60120
7.0	PTAO70020	PTAO70030	PTAO70040	PTAO70060	PTAO70080	PTAO70100	PTAO70120
8.0	PTAO80020	PTAO80030	PTAO80040	PTAO80060	PTAO80080	PTAO80100	PTAO80120
9.0	PTAO90020	PTAO90030	PTAO90040	PTAO90060	PTAO90080	PTAO90100	PTAO90120
10.0	PTAO10020	PTAO10030	PTAO10040	PTAO10060	PTAO10080	PTAO10100	PTAO10120
12.0	PTAO12020	/	/	/	/	/	/

Over the Wire (Effective length is 135cm)							
Balloon Diameter (mm)	Balloon Length (mm)						
	20	30	40	60	80	100	120
3.0	PTAO30020 L	PTAO30030 L	PTAO30040 L	PTAO30060 L	PTAO30080 L	PTAO30100 L	PTAO30120 L
3.5	PTAO35020 L	PTAO35030 L	PTAO35040 L	PTAO35060 L	PTAO35080 L	PTAO35100 L	PTAO35120 L
4.0	PTAO40020 L	PTAO40030 L	PTAO40040 L	PTAO40060 L	PTAO40080 L	PTAO40100 L	PTAO40120 L
4.5	PTAO45020 L	PTAO45030 L	PTAO45040 L	PTAO45060 L	PTAO45080 L	PTAO45100 L	PTAO45120 L
5.0	PTAO50020 L	PTAO50030 L	PTAO50040 L	PTAO50060 L	PTAO50080 L	PTAO50100 L	PTAO50120 L
5.5	PTAO55020 L	PTAO55030 L	PTAO55040 L	PTAO55060 L	PTAO55080 L	PTAO55100 L	PTAO55120 L
6.0	PTAO60020 L	PTAO60030 L	PTAO60040 L	PTAO60060 L	PTAO60080 L	PTAO60100 L	PTAO60120 L
7.0	PTAO70020 L	PTAO70030 L	PTAO70040 L	PTAO70060 L	PTAO70080 L	PTAO70100 L	PTAO70120 L
8.0	PTAO80020 L	PTAO80030 L	PTAO80040 L	PTAO80060 L	PTAO80080 L	PTAO80100 L	PTAO80120 L
9.0	PTAO90020 L	PTAO90030 L	PTAO90040 L	PTAO90060 L	PTAO90080 L	PTAO90100 L	PTAO90120 L
10.0	PTAO10020 L	PTAO10030 L	PTAO10040 L	PTAO10060 L	PTAO10080 L	PTAO10100 L	PTAO10120 L
12.0	PTAO12020 L	/	/	/	/	/	/

Ordering Information

Catalogue No.	Supercross™ PTA Balloon Dilatation Catheter	CE
---------------	---------------------------------------------	----



Angiocide™

Peripheral Cutting Balloon

Features

Hydrophilic Coating

- The patented Hydrosurf™ hydrophilic coating enhances its ability to reach and go over the lesions

Micro Blade

- Made of precision alloy steel, of high sharpness and reasonable blade design

Nylon

- Nylon material makes it have good pressure resistance

Radiopacity markers

- Platinum markers at both ends of the balloon for precise positioning

Unique Advantages

Dilate under lower pressure

- Balloon Compliance

Change the compliance of lesions

- Reduce the axial migration of plaque
- Decrease the elastic recoil of lumen

PCB

- 15mm length
- 2-4 mm diameters
- 0.014"guidewire compatible.
- 15.5mm lengths
- Available in RX

Regular and orderly incision of lesions

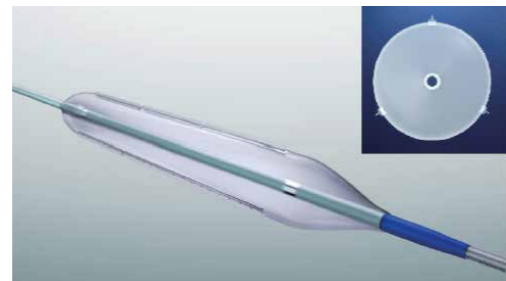
- Lower the risk of irregular dissection and acute occlusion

Precise anchoring of lesions

- Avoid balloon slippage
- Larger area of plaque crushing



Folded state



Working state

Ordering Information

Specification & model	Outer diameter (mm)	Eective length (mm)	Blade components length (mm)	Blade height (mm)	Blade components quantity (pcs)	Nominal pressure (atm)	Rated burst pressure (atm)
2.0×15	2.0	15.5	15	0.15	3	7	12
2.5×15	2.5	15.5	15	0.15	3	7	12
3.0×15	3.0	15.5	15	0.15	3	7	12
3.5×15	3.5	15.5	15	0.15	3	7	12
4.0×15	4.0	15.5	15	0.15	3	7	12

Ordering Information

Catalogue No.	Angiocide™ Peripheral Cutting Balloon

08

Cardiac Rhythm Management Products



Pacemakers

- 51 Implantable Single Chamber Pacemaker
- 52 Implantable Dual Chamber Pacemaker



Features

- Patent technology of RF power supply provides safe program control without consuming the battery power.
- 9 technical parameters contribute to the accuracy of stored program control.
- Events counter and program control tests are convenient.
- Multiple protections effectively avoid the interference.
- Ergonomic design with small size, light weight and long lifetime.
- Compatible with the major programmers in the market.

Specifications

Connector	IS-1
Size	48.5mm x 41mm x 6mm
Weight	20.8g
Volume	8.8cm ³
Battery	1.0Ah, 2.8V
Battery Lifetime	10.2years (100% pace-making)

Technical Parameters

Parameter	Range
Pacing Mode	SSI/SST/SOO
Basic Rate (ppm)	30...(1)... 60 ...(1)...100...(10)...160
Max. Rate Limitation (ppm)	180
Pulse Amplitude (V)	0.1...(0.1)... 3.8 ...(0.1)...8.1
Pulse Width (ms)	0.06...(0.06)...0.18, 0.25...(0.06)... 0.37 ...(0.06)...0.79, 0.86...(0.06)...1.40, 1.47...(0.06)...1.59
Sensing Sensitivity (mV)	0.5...(0.5)... 2.5 ...(0.5)...10.0
Refractory Period (ms)	200...(25)... 325 ...(25)...500
Hysteresis (ms)	0 ...(50)...350
Pacing Polarity	Unipolar/Bipolar
Sensing Polarity	Unipolar/Bipolar

Note: Bold parameters are factory settings.

Ordering Information

Catalogue No.	2312M
---------------	-------

Notice: Please contact the sales for detailed information before placing the order.

Implantable Single Chamber Pacemaker



Features

Chinese first dual-chamber pacemaker series with independent intellectual property.

- Patent technology of RF power supply provides safe program control without consuming the battery power.
- New generation programmer provides accurate control of the parameters.
- Imported lithium-iodine battery ensures the durable lifetime.
- Optimized ergonomic design makes it comfortable after implantation.
- Multiple protections effectively avoid the interference to guarantee the patients safety.

Implantable Dual Chamber Pacemaker

Technical Parameters

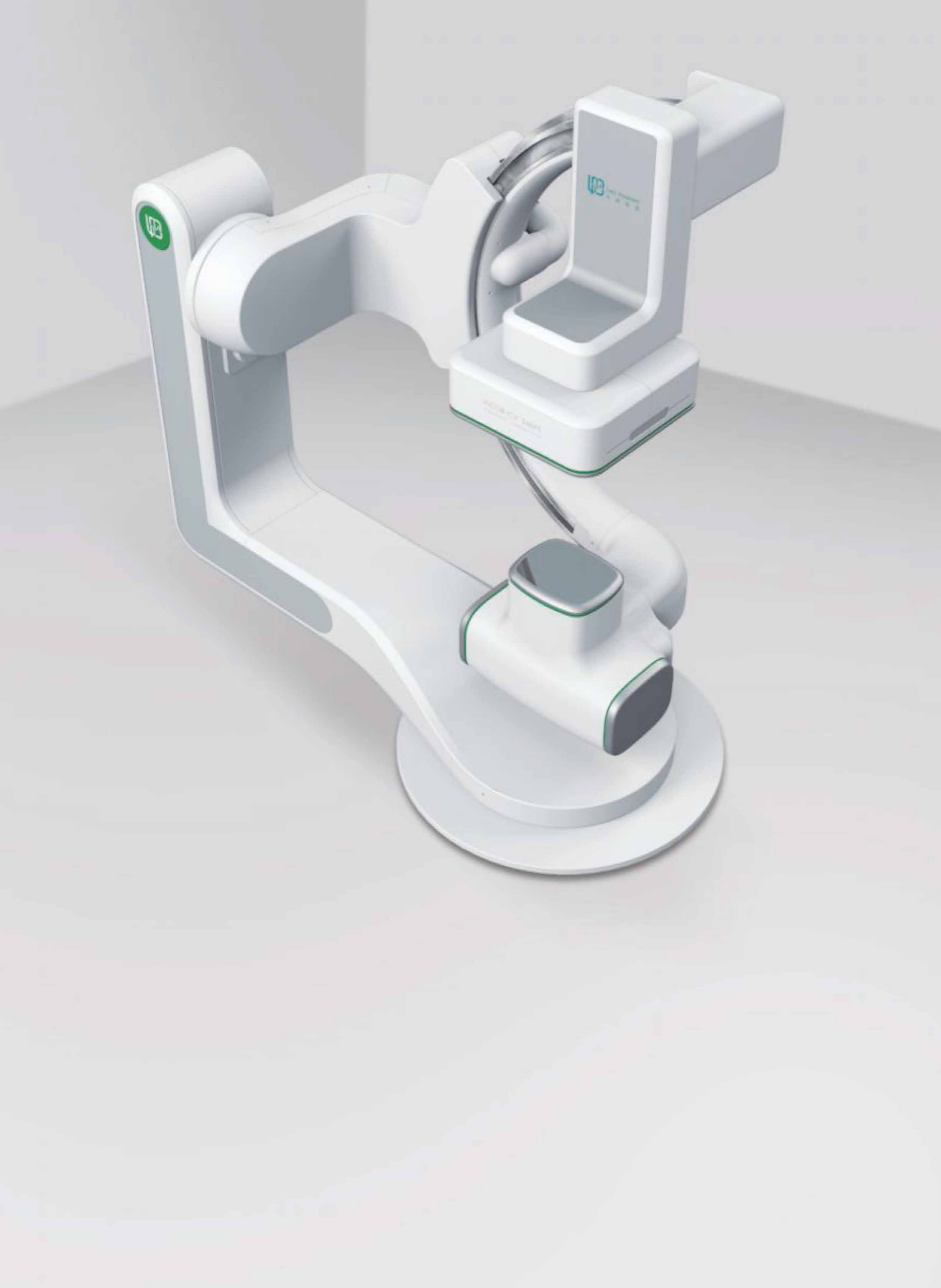
Parameter	Range
Pacing Mode	DDD(R)/VDD(R)/DDI(R)/DVI(R)/DOO(R)/AAI(R)/AAT(R)/AOO(R)/VVI(R)/VVT(R)/VOO(R)
Basic Rate (ppm)	30...(1)... 60 ...(1)...100...(10)...180
Ventricular Pulse Amplitude (V)	0.1...(0.1)... 3.6 ...(0.1)...8.1
Ventricular Pulse Width (ms)	0.06...(0.06)...0.24, 0.31...(0.06)... 0.37 ...(0.06)...0.85, 0.92...(0.06)...1.46, 1.53
Ventricular Sensing Sensitivity (mV)	0.5...(0.5)... 2.5 ...(0.5)...10.0
Ventricular Refractory Period (ms)	150...(25)... 250 ...(25)...500
Hysteresis (ms)	0 ...(50)...350
Ventricular Pacing Polarity	Unipolar/Bipolar
Ventricular Sensing Polarity	Unipolar/Bipolar
Atrial Pulse Amplitude (V)	0.1...(0.1)... 3.6 ...(0.1)...8.1
Atrial Pulse Width (ms)	0.06...(0.06)...0.24, 0.31...(0.06)... 0.37 ...(0.06)...0.85, 0.92...(0.06)...1.46, 1.53
Atrial Sensing Sensitivity (mV)	0.25...(0.25)... 1.0 ...(0.25)...5.0
Postventricular Atrial Refractory Period (PVARP) (ms)	150...(25)... 250 ...(25)...500
AV Period (ms)	30...(10)... 180 ...(10)...350
Atrial Refractory Period Extended (ms)	0 ...(25)...350
Sensor	Accelerometer

Note: Bold parameters are factory settings.

Ordering Information

Catalogue No.	8631DR	8631D
---------------	--------	-------

Notice: Please contact the sales for detailed information before placing the order.



09 / Medical Angiography X-ray System

Floor-mounted

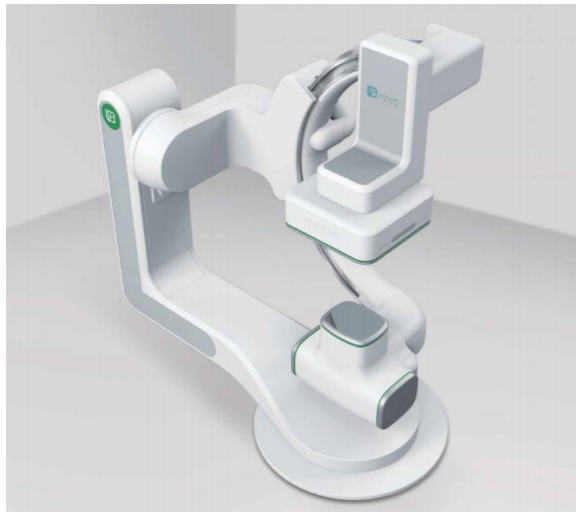
55 Vicor-CV SWIFT

Ceiling-mounted

59 Vicor-CV Robin C / F



Vicor-CV SWIFT Medical Angiography X-ray System



Product Introduction

Vicor-CV SWIFT Medical Angiography X-ray System is a new angiography system independently developed by Lepu Medical Equipment (Beijing) Co., Ltd. In virtue of 20-year manufacturing experience and service experience for more than 300 users, we launch a new medical system featuring floor-mounted C-arm rack and other mainstream accessories; with equipment, you can realize interventional examination and treatment towards a range of diseases in all departments, including cardiovascular and cerebrovascular diseases and peripheral vascular diseases, thereby providing accurate and reliable intervention images for physicians.

High Definition and Stable Image

High resolution and wide-field images to support accurate and efficient diagnosis clinically.

Features

- Digital flat panel detector
- Multiple panel models
- Adjustable, and wide-field
- Panel-digitized dynamic range up to 16 bit
- Accurate and clear details
- Resolution up to 1956×1956

Long-lasting and Efficient Performance

Features

- 3.0M heat capacity X-Ray tube, having long-lasting and stable life
- Liquid-metal lubricated bearing to improve heat dissipation efficiency
- Triple focus spot, provide clear images for different clinical application



Safe Radiation Protection

Features

- Accurate working of the collimator to effectively reduce scattered rays
- Active radiation dose management and monitoring, and real-time and accurate recording of radiation dose and other information with RDSR during operation to realize effective supervision over the radiation dose
- Function of virtual collimator, to locate the checked site without X-ray egression
- Multiple dose models to meet different needs, and obtain high-quality images even with low dose

User-friendly Rack Design

Features

Easy to operate

The C-arm features large space, full coverage, multi-axis combined motion, multidirectional rotation, fast positioning, and free manipulation, thereby simplifying the procedures for physicians.

Multi-operation protection

Safe operation through triple protection

- Anti-collision warning system
- Collision braking device
- Motion limit

Stent Enhancement

As an image recognition technique, it is used to realize the motion compensation for the X-ray image to clearly and accurately display the fine structure of the stent, and help physicians immediately evaluate the release of the stent during the operation.

Features

- This feature requires detailed consultation with sales

New Upgrade of DSA Low-Dose Software Management Platform

Vicor CV Workstation

- 64-bit Chinese interface, providing user-friendly interactive interface
- Accelerated real-time processing module with efficient GPU, and stable and reliable image
- Supporting multiple image processing tools such as automatic measurement, ventricular analysis and QCA analysis
- Real-time function of virtual beam limiter, helpful to reduce scattered rays and improve the safety of both physicians and patients
- Radiation dose report in compliance with IEC standard
- Safety design in compliance with IHE equipment connectivity and network safety standard

Vicor Angio Expert

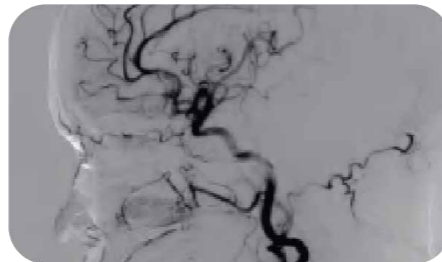
- Data transmission in compliance with DICOM3.0 and related standards
- Supporting data storage and migration management
- Efficient completion of vascular contour and morphological data analysis, and generation of QCA analysis report
- Supporting dynamic correction of stent position to enhance stent visualization
- Full-automatic seamless image splicing to expand diagnostic coverage and clearly display limb details

Clinical Application In All Departments

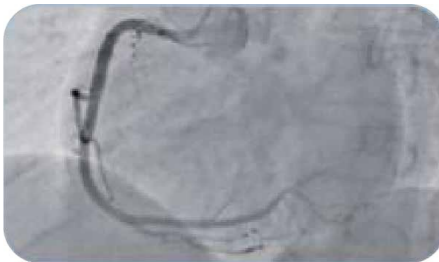
Cardiovascular intervention in left coronary



Neurointervention



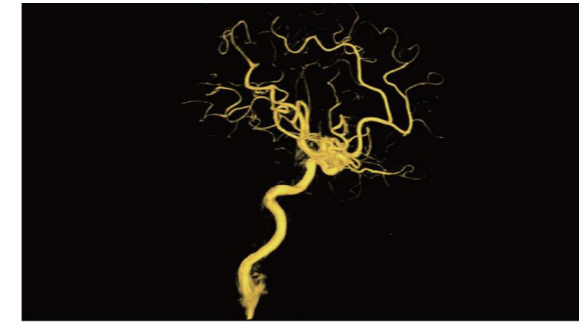
Cardiovascular intervention in right coronary



Step imaging



Abdomen



Swift 3D

With the perfect 3D reconstruction function, Vicor-CV SWIFT supports reconstruction techniques such as volume reconstruction (VR), multiplanar reconstruction (MPR), maximum intensity projection (MIP), and minimum intensity projection (MINIP). It has great advantages in analyzing the three-dimensional morphology and spatial relationship of blood vessels, and has great diagnostic value in interventional therapy for vascular system diseases, tumors, etc.:

Features

- It can avoid vascular structure overlapping, to make vascular images clearer and more accurate.
- The three-dimensional relationship and tubal lumen structure between lesion sites and other normal tissues and organs can be observed at any angle.
- The dosage of contrast agent, the time of diagnosis and treatment and surgery, and the exposure dose can be reduced.
- Accurate measurement results can provide data for surgery and interventional treatment.

Ordering Information

Catalogue No.

Vicor-CV SWIFT

Notice: Please contact the sales for detailed information before placing the order.



Vicor-CV Robin C / F Digital Subtraction Angiography System



Product Introduction

Vicor-CV Robin C/F Digital Subtraction Angiography System is a ceiling-suspended and floor-mounted angiography system independently developed by Lepu Medical Equipment (Beijing) Co., Ltd. based on a new digital flat panel detector. By virtue of 20-year manufacturing experience and technological innovation, Lepu Equipment can provide customers with personalized options from components to services, suitable for interventional operation over a range of diseases in all departments, such as cardiovascular and cerebrovascular diseases, so as to realize accurate, safe, fast and efficient interventional therapy.

Flexible choices as needed

Flat panel detectors with different configurations.

Features

- 30×30/30×40 compatible dimensions, easy to perform the interventional surgery for the whole body
- 16-bit super HD display, to effectively improve the dynamic range
- 154μm/194μm pixel, flexibly selected according to customer's needs
- Multi-field full coverage



Features

HD images, showing full details

Concentrated on the user's concerns, it makes lesions have nowhere to hide.

Safety protection to safeguard physicians and patients

Intelligent radiation dose control and triple motion protection, to safeguard the safety of both physicians and patients.

Continuous operation and stable performance

X-ray tube with high heat capacity, to fully meet the needs for interventional diagnosis and treatment.

Convenient and efficient operation

Humanized design makes the operation fast and efficient.



Bulb tube with individualized configuration

Features

Ideal choice for primary medical care (G-1592)

• Stable operation at high power and load, strong environmental adaptability and easy maintenance, especially suitable for primary medical care.

Choice for diverse needs (EX79039)

• A grid-controlled technology to eliminate the glow and afterglow and effectively reduce the radiation dose.

Liquid metal lubricated bearing continuously rotates at high speed, to capture images without time delay. With ultra-large heat capacity, it can meet the needs for complex interventional surgery.



Unrestricted access

In full consideration of the different needs in different hospital installation sites, the fourth-generation Vicor-CV Robin C (ceiling-mounted)/F (floor-mounted) medical X-ray angiography equipment is provided with a more stable motion system; since it is flexibly and conveniently operated, it can improve the operation efficiency.

Features

Isocentric C-shaped arm

Flexible control and intelligent lesion locking.

Intelligent catheter bed

Supporting step function, and meeting the needs of step imaging of lower limbs.

ECG control interface

Easy to use

The control console is functionally clear with all control functions.

Intelligent control system conforms to ergonomics and is convenient to operate.

Multi-axis combined motion, full coverage

With the distributed motion control system, it can realize accurate and stable motion.

Multi-axis combined motion is helpful to improve the clinical efficiency.



Stent Enhancement

As an image recognition technique, it is used to realize the motion compensation for the X-ray image to clearly and accurately display the fine structure of the stent, and help physicians immediately evaluate the release of the stent during the operation.

** This feature requires detailed consultation with sales.*

Deep learning can be used to divided and reconstruct the coronary artery CTA, calculate the fractional flow reserve (FFR), and help physicians evaluate patient's functional myocardial ischemia.

** This feature requires detailed consultation with sales.*

Professional Software Systems

Vicor CV Workstation

- 64-bit operating system, providing user-friendly interactive interface
- Accelerated real-time processing module with efficient GPU, and stable and reliable image
- Supporting multiple image processing tools such as automatic measurement, ventricular analysis and QCA analysis
- Real-time function of virtual beam limiter, helpful to reduce scattered rays and improve the safety of both physicians and patients
- Radiation dose report in compliance with IEC standard
- Safety design in compliance with network safety standard

Vicor Angio Expert

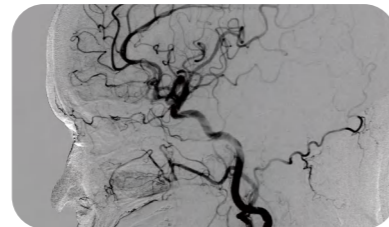
- Data transmission in compliance with DICOM3.0 and related standards
- Supporting data storage and migration management
- Efficient completion of vascular contour and morphological data analysis, and generation of QCA analysis report
- Supporting dynamic correction of stent position to enhance stent visualization
- Full-automatic seamless image splicing to expand diagnostic coverage and clearly display limb details

Clinical Application In All Departments

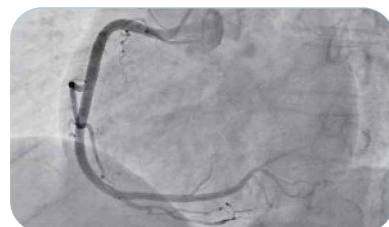
Cardiovascular intervention in left coronary



Neurointervention



Cardiovascular intervention in right coronary



Step imaging



Abdomen



One-Stop Solution

- Lepu Equipment, provides you with an overall solution from interventional equipment to operation of the intervention department.
- Customizes the development and construction roadmap for the intervention department of hospitals.
- Helps hospitals quickly start their interventional department construction.
- We quickly start and set up Interventional Diagnosis and Treatment Center with you within 6 months.
- We provide support and assistance in designing SpecializedCath-lab and setting up medical teams.
- We provide three-in-one service: operation, medical treatment quality and professional publicity.

Ordering Information

Catalogue No.

Vicor-CV Robin C / F

Notice: Please contact the sales for detailed information before placing the order.