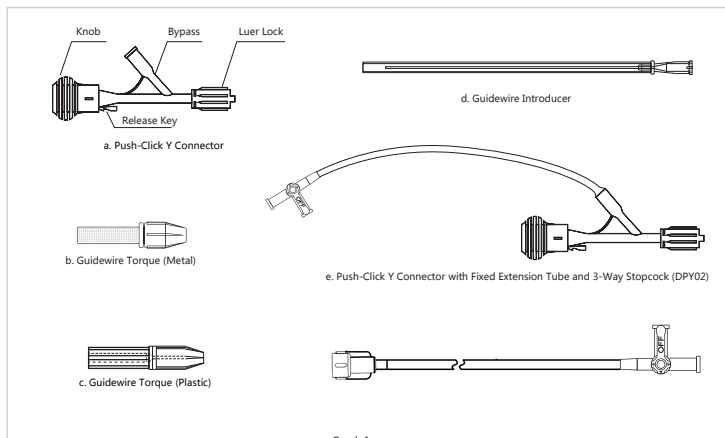


Push-Click Y Connector Kit Instructions For Use

Please read instructions carefully before use.

Ref No.	Push-Click Y Connector	Guidewire Torque Device	Guidewire Insertion Tools
DPY01	Push-Click Y Connector (a)	N/A	N/A
DPY01B		Guidewire Torque (Plastic) (c)	Guidewire Introducer (d)
DPY01R		Guidewire Torque (Metal) (b)	
DPY02	Push-Click Y Connector with Fixed Extension Tube and 3-Way Stopcock (e)	N/A	N/A
DPY02B		Guidewire Torque (Plastic) (c)	Guidewire Introducer (d)
DPY02R		Guidewire Torque (Metal) (b)	
DPY03	Push-Click Y Connector (a) with Removable Extension Tube and 3-Way Stopcock (f)	N/A	N/A
DPY03B		Guidewire Torque (Plastic) (c)	Guidewire Introducer (d)
DPY03R		Guidewire Torque (Metal) (b)	

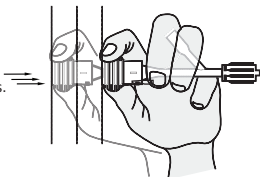


Indications:

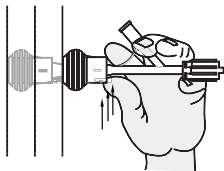
Y Connector intends to provide two tunnels into the blood vessel, this can introduce the contrast and Guidewire or catheters during the interventional surgery. Y Connector Valve intends to prevent blood lost. Guidewire Introducer inserts the valve of Y connector, making a tunnel for guidewire to get through and protecting Guidewire tip. Guidewire Torquer holds Guidewire and makes Torque Guidewire move easier.

Operating Y Connector Kit (Push-Click):

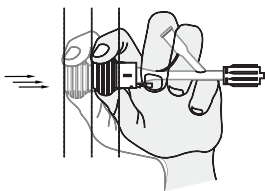
1. Check that the package is well sealed and without any damage.
2. Flush the devices with standard saline before use.
3. Connect the removable 3-way stopcock with bypass if necessary.
4. Securely connect the distal luer lock with catheter or other devices.
5. Press the knob to the end to keep the valve in "Open" position ("click" sound shall be heard) (see Graph 2)
6. When the valve is in "Open" position, devices including guidewire, balloon catheter can pass through.
7. Press the release key will rest the valve to "Close" position. (see Graph 3)



Graph 2



Graph 3



Graph 4

8. Press knob by fingers between "Open" and "Close" can adjust the valve from full open to full close which may helping the device though with minimum blood lost. (see Graph 4)
9. Devices can move though the Y connector even when valve is closed.
10. Guidewire Introducer can help the insertion of guidewire.
11. Using Guidewire Torquer is recommended to help controlling guidewire.

Warnings:

1. Read the instructions before use.
2. The device is designed for single use only. Do not sterilize and /or reuse.
3. Do not use it after use before date (expiry date).
4. Do not use it if the package is damaged or not well sealed.
5. Luer connector must be well connected, and the valve must be closed. Incorrect connection, lose connection or the valve not being closed properly may cause leaking or air getting into blood vessel.
6. Do not inject air into the blood vessel.
7. Suggested working pressure is under 58PSI (400Kpa).
8. For qualified physicians use only.
9. Please dispose the device after use, according to the local legislation.

⚠ Caution: Please dispose the device after use according local laws and regulations.

Signs and Legends:



Sterilized using ethylene oxide



Use before expiry Date



Do Not Reuse



Manufactured Date



Caution



Manufacturer

LOT

Batch Code

REF

Catalogue Number

R_xonly

Qualified physician use



Contents

EC REP

Authorized Representative in the European Community only

Storage:

Store in a dry, dark, cool place.

The use before date (expiry date) see label.

**Manufacture Information:**

Manufacturer : Beijing Demax Medical Technology Co., Ltd.

Manufacturing Address 1 : First Floor, No.1 Building, No. 8 HongdaBeiLu, BDA, Beijing, 100176, China

Manufacturing Address 2 : 13-7A Jingshengnansi Street, Majuqiao Tongzhou District, Beijing, 101102, China

After-sales Service: Demax Medical

Sydney Office : Suite241, 117 Old Pittwater Rd Brookvale, NSW, 2100, Australia

Beijing Office : First Floor, No.1 Building, No. 8 HongdaBeiLu, BDA, Beijing, 100176, China

Tel.: 0061-02-80061746

Fax: 0061-02-80886477

EC REP**European Representative:**

Shanghai International Holding Corp. GmbH (Europe)

Eiffestrasse 80, 20537 Hamburg, Germany

Tel.: 0049-40-2513175

Fax: 0049-40-255726